

Plans and drawings relevant to reports submitted to Western Area Planning Committee

Thursday 3rd October 2024 at 6pm

**At Council Chamber, Council Offices, Market Street,
Newbury, RG14 5LD**

&

And via Zoom

[to be read in conjunction with the main agenda]

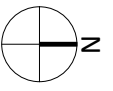
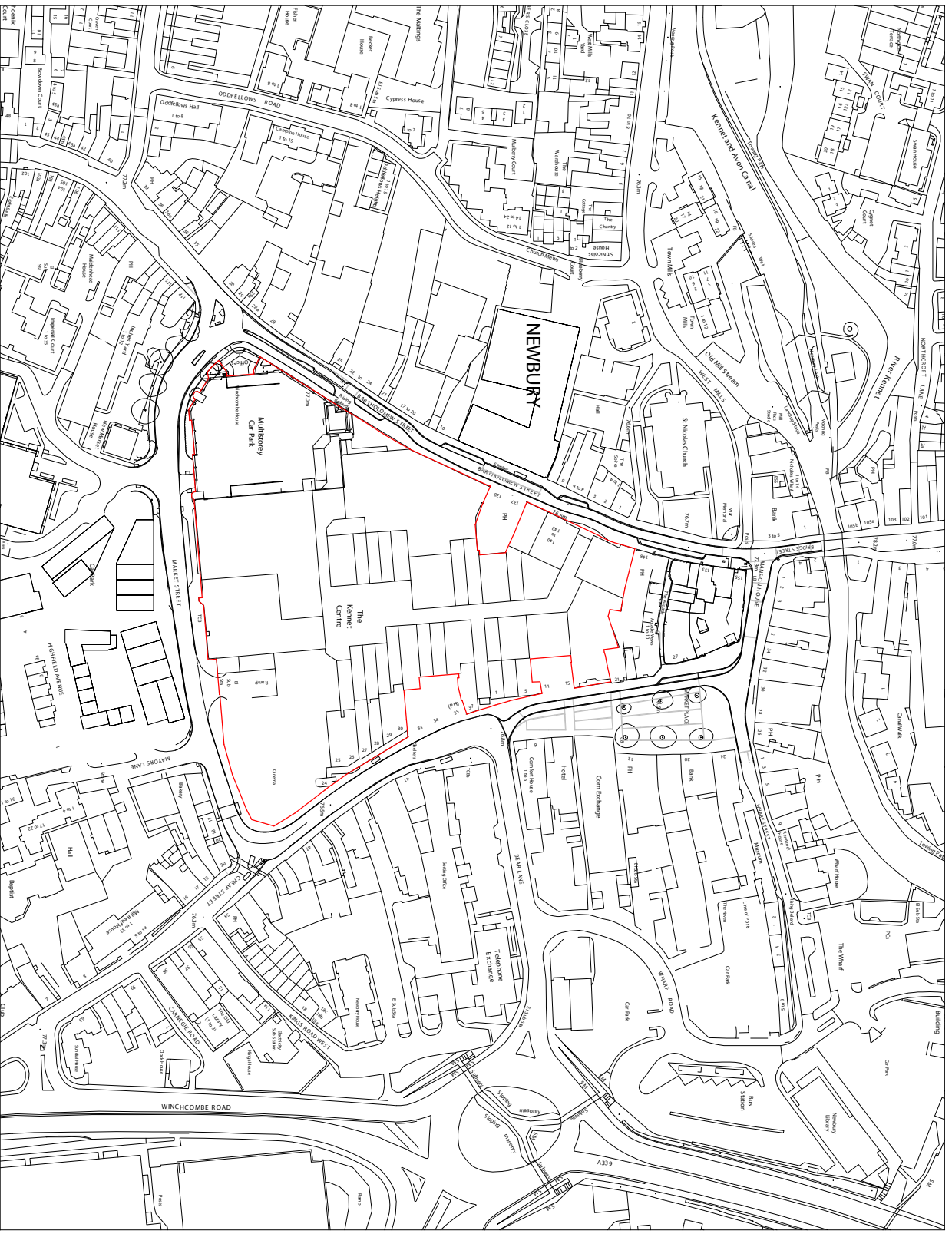
Please note:

- *All drawings are copied at A4 and consequently are not scalable*
- *Most relevant plans have been included – however, in some cases, it may be necessary for the case officer to make a selection*
- *All drawings are available to view at www.westberks.gov.uk*



West Berkshire
C O U N C I L

23/02094/FULMAJ
The Mall
The Kennet Centre
Newbury
RG14 5EN

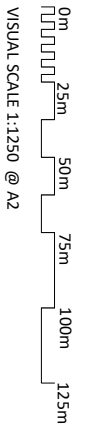


NOTES

- CONSULTANTS
- Refer to previous consultants' drawings for details
- Refer to landscape consultants' drawing for details
- A&AS
- Refer to area schedule

© Copyright Reserved, ColladoCollins Architects Ltd

| Ref | Notes | Date | By | Auth |
|-----|--------------------------------|------------|----|------|
| PA | Issued for Planning Submission | 06/09/2023 | | |
| | | | | |
| | | | | |
| | | | | |
| | | | | |
| | | | | |
| | | | | |
| | | | | |
| | | | | |



KEY

█ APPLICATION BOUNDARY

ColladoCollins Architects

17-19 Foley Street
 London E1 6AN
 T 020 7580 2800
 F 020 7580 2912
 info@colladocollins.com
 www.colladocollins.com

Date: 06/09/2023
 Checked by: RC
 Scale @ A2: 1:1250
 Scale @ A1: 1:2500
 CAD File No:

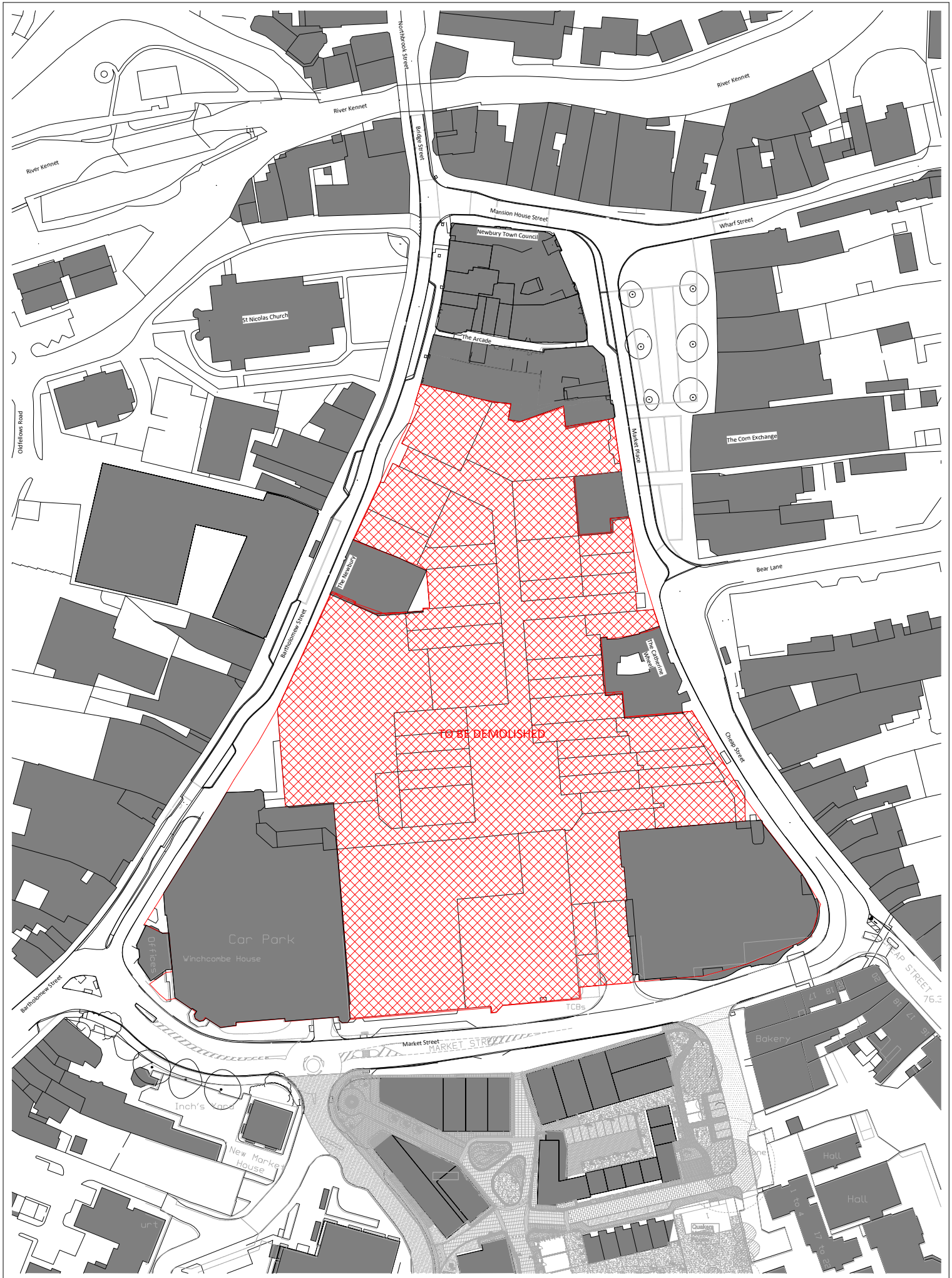
LOCHAILORT

**Eagle Quarter, Newbury
 Site Location Plan**

**PLANNING
 20011**

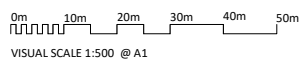
P0-001

PA
 Revision



NOTES
 CONSULTANTS
 Refer to highways consultant's drawings for details
 Refer to landscape consultant's drawings for details
 AREAS
 Refer to area schedule

| Rev | Notes | Date | By | Auth |
|-----|--------------------------------|------------|----|------|
| 01 | Issued for Planning Submission | 06/09/2023 | | |
| | | | | |
| | | | | |
| | | | | |
| | | | | |
| | | | | |
| | | | | |
| | | | | |
| | | | | |



KEY
 — APPLICATION BOUNDARY

ColladoCollinsArchitects

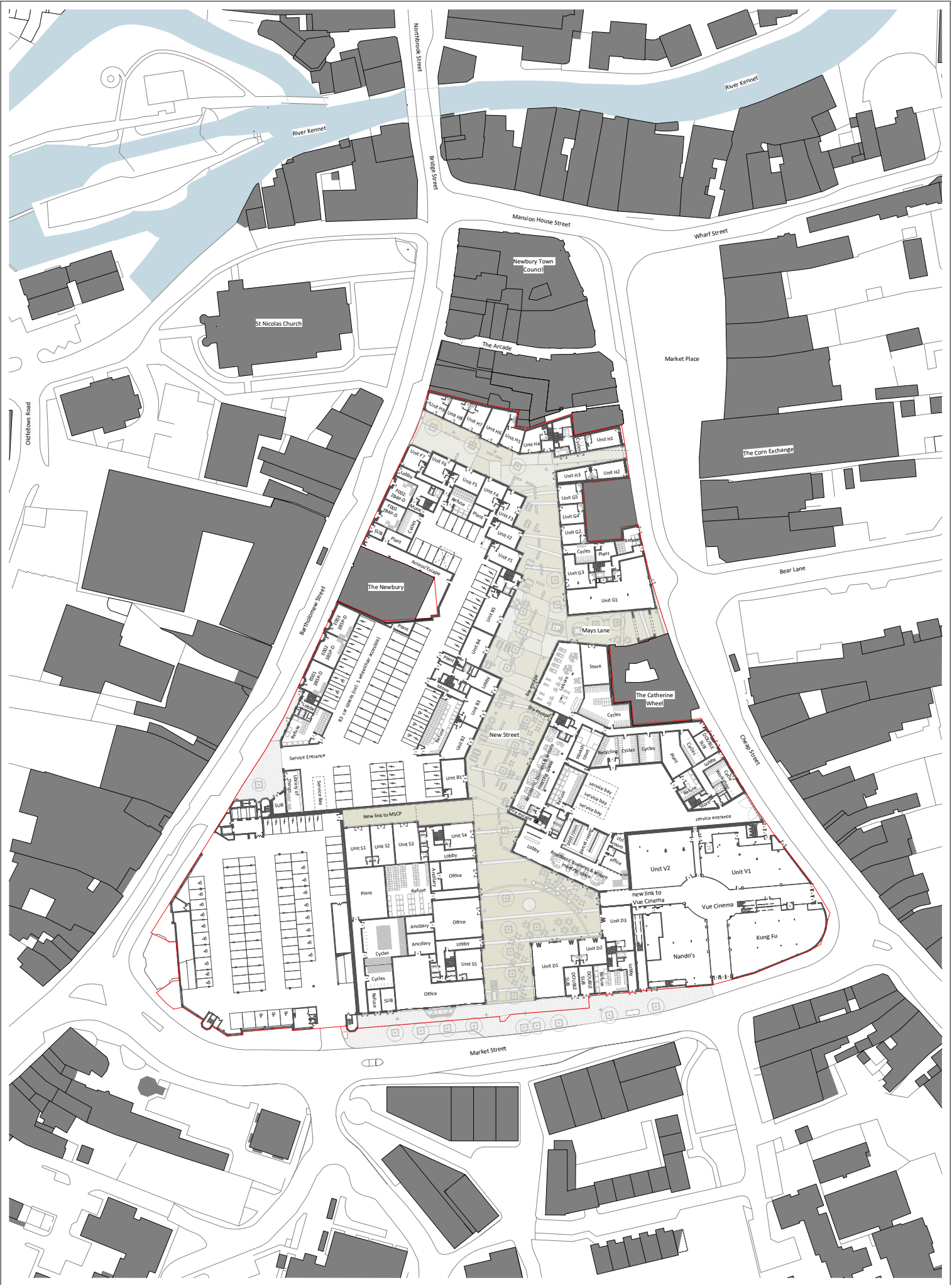
17-19 Foley Street
 London W1W 6SW
 T 020 7580 3490
 F 020 7580 2917
 info@colladocollins.com
 www.colladocollins.com

Date: 06/09/2023
 Drawn by: LK
 Checked by: RC
 Scale @ A1: 1:500
 Scale @ A3: 1:1000
 CAD File No:

LOCHAILORT
 Eagle Quarter, Newbury
 Demolition Site Plan

PLANNING
 20011 P0-030

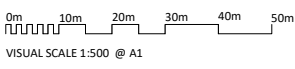
PA
 Revision



NOTES
 CONSULTANTS
 Refer to highway consultant's drawings for details.
 Refer to landscape consultant's drawings for details.
 Refer to area schedule



| Rev. | Notes | Date | By | App'd |
|------|------------------------------------|------------|-----|-------|
| 1/A | PLANNING SUBMISSION | 06/09/2023 | MMJ | RC |
| 1/B | Post-planning amendments | 12/10/2023 | MMJ | RC |
| 1/C | Revised for Fire Engineer comments | 01/12/2023 | MMJ | RC |
| | | | | |
| | | | | |
| | | | | |
| | | | | |
| | | | | |
| | | | | |



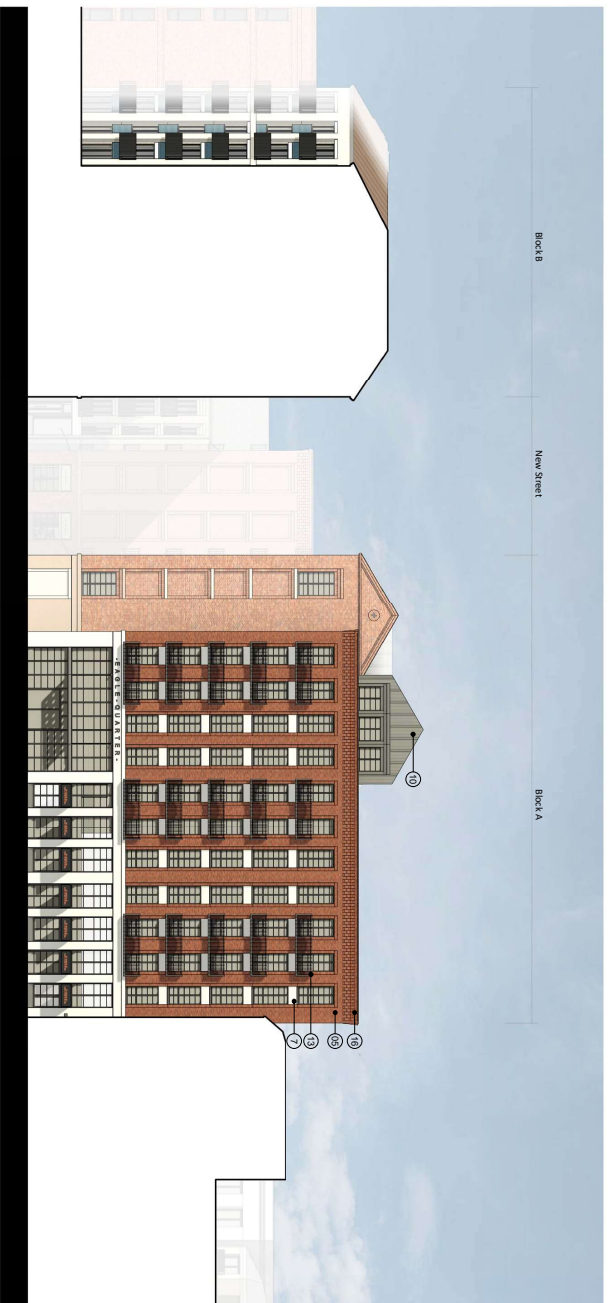
ColladoCollins Architects

17-19 Foley Street
 London W1W 0SW
 T 020 7580 3490
 F 020 7580 9197
 info@colladocollins.com
 www.colladocollins.com

Date: 29/01/2021
 Drawn by: LK
 Checked by: RC
 Scale @ A1: As indicated
 Scale @ A0: 1:1000
 CAD File No:

LOCHAILORT
 Eagle Quarter, Newbury
 Proposed Site Plan - Ground Floor

PLANNING
 20011 P0-100



1 Block A - South Elevation
1 : 200



2 Block A - West (New Street) Elevation
1 : 200

NOTES

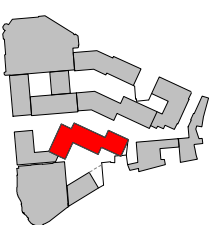
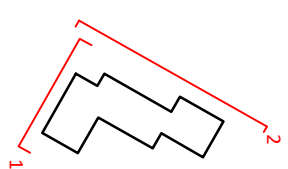
- 1. Refer to the main consultant's drawings for details.
- 2. Refer to the main consultant's drawings for details.
- 3. Refer to the main consultant's drawings for details.
- 4. Refer to the main consultant's drawings for details.

| NO. | REVISION | DATE | BY | CHK |
|-----|-------------------------------|------------|----|-----|
| 01 | Issue for planning submission | 10/01/2020 | MM | MM |
| 02 | Revised drawing for comment | 03/09/2021 | MM | MM |
| 03 | Final drawing for submission | 05/09/2021 | MM | MM |
| 04 | Final drawing for submission | 05/09/2021 | MM | MM |
| 05 | Final drawing for submission | 05/09/2021 | MM | MM |
| 06 | Final drawing for submission | 05/09/2021 | MM | MM |
| 07 | Final drawing for submission | 05/09/2021 | MM | MM |
| 08 | Final drawing for submission | 05/09/2021 | MM | MM |
| 09 | Final drawing for submission | 05/09/2021 | MM | MM |
| 10 | Final drawing for submission | 05/09/2021 | MM | MM |



MATERIAL NOTES

- 17 Brick - Beige
- 18 Brick - Light Grey
- 19 Brick - Light Red
- 20 Brick - Red
- 21 Brick - Dark Red
- 22 Brick - Blue
- 23 GRC or similar - Light Grey
- 24 GRC or similar - Dusky Pink
- 25 Roof Tiles
- 26 Standing Seam Metal Roof - Dark Grey
- 27 Window / Door Frame - Dark Grey
- 28 Window / Door Frame - Bronze Effect
- 29 Metal Railing / Details - Dark Grey
- 30 Metal Railing / Details - Bronze Effect
- 31 Expanded Mesh
- 32 Brick Detail to Parapet
- 33 White Render
- 34 Window / Door Frame - White
- 35 White GRC Detailing
- 36 Brick - Diamond Pattern
- 37 Clay Hanging Wall Tiles
- 38 Window / Door Frame - Dark Green
- 39 Standing Seam Metal Roof - Dark Brown
- 40 Solid Panels to Sky Bridge
- 41 Light Grey Render
- 42 Obscure Glass Windows

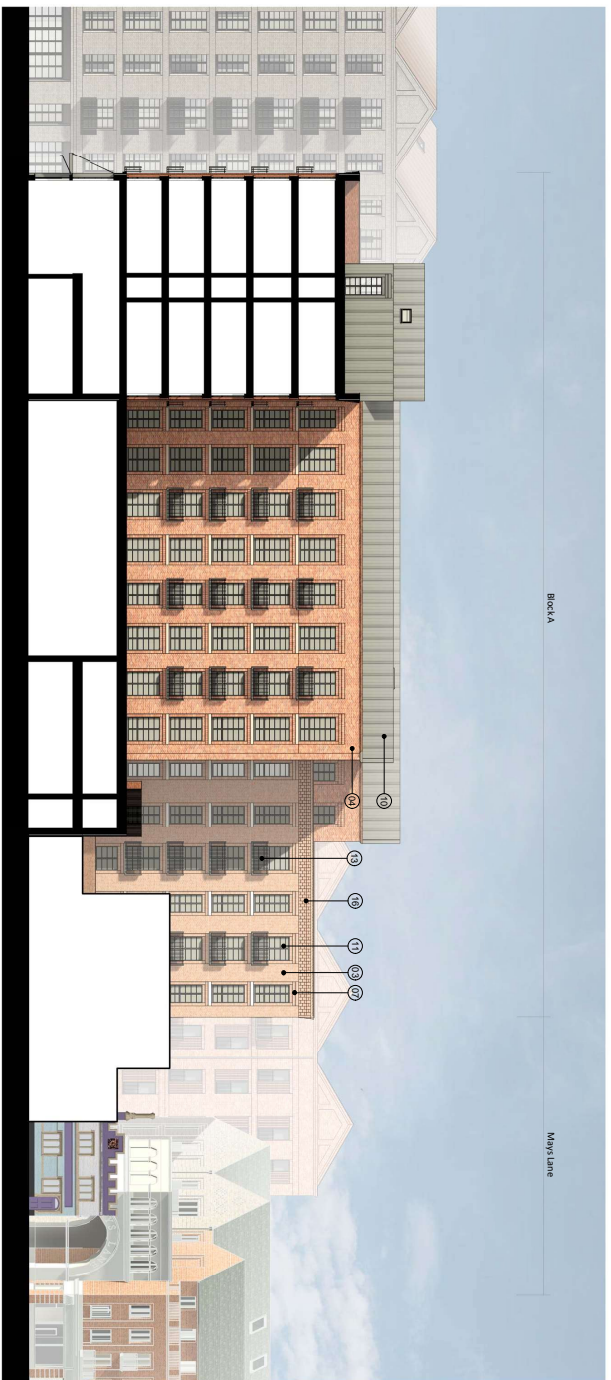


Colladocollins Architects

17-19 King Street
Newbury, Berkshire
RG14 5AA
Tel: 01344 860 337
www.colladocollins.com

Date: 29/01/2020
Checked by: A. Beckford
Drawn by: S. Collins

LOCHALLOFT
Eagle Quarter, Newbury
Proposed Elevations - Block A
South and West
PLANNING
P3-101



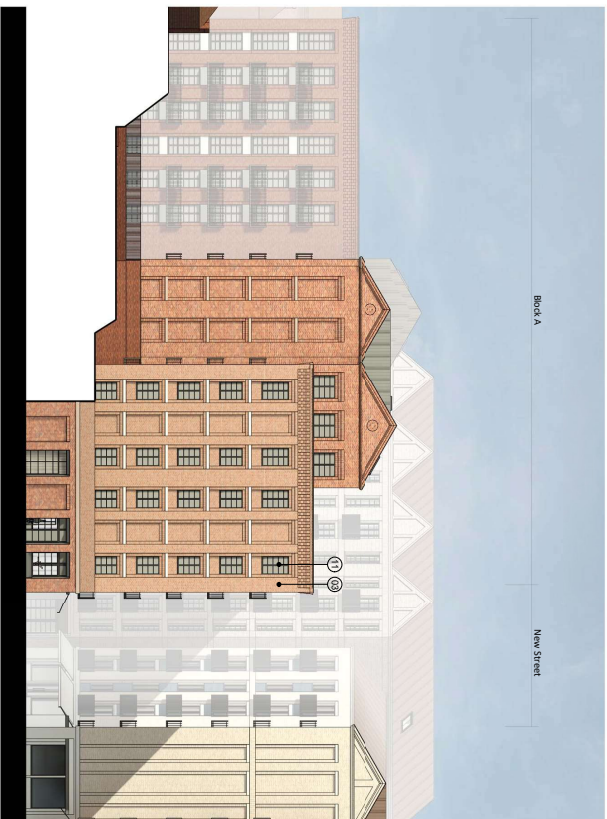
1 Block A - East Elevation/Section

1 : 200



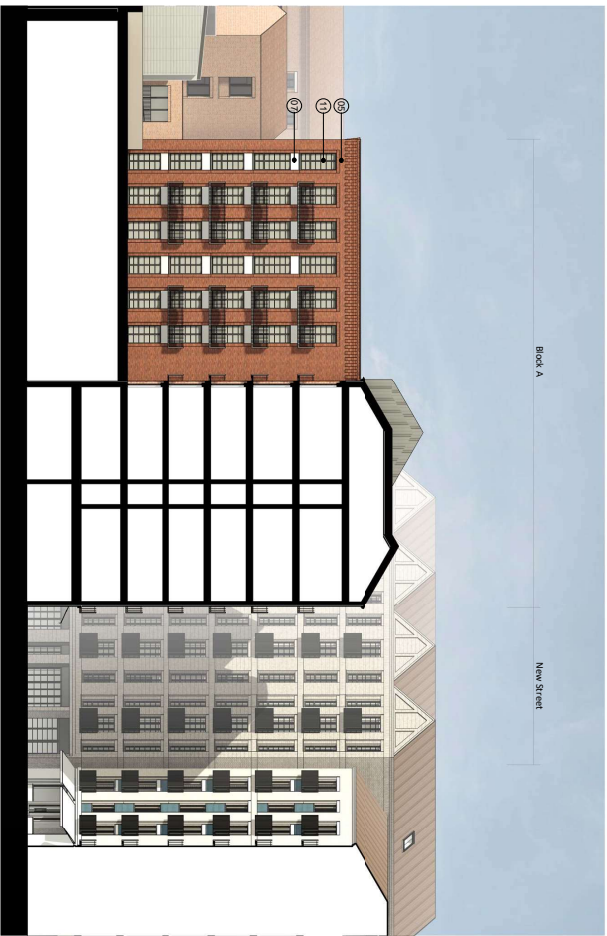
2 Block A - East Elevation 2

1 : 200



3 Block A - North (Mays Lane) Elevation

1 : 200

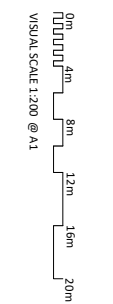


4 Block A - North Elevation/ Podium Section

1 : 200

NOTES
 1. Refer to the drawings for details.
 2. Refer to the drawings for details.
 3. Refer to the drawings for details.
 4. Refer to the drawings for details.
 5. Refer to the drawings for details.
 6. Refer to the drawings for details.
 7. Refer to the drawings for details.
 8. Refer to the drawings for details.
 9. Refer to the drawings for details.
 10. Refer to the drawings for details.
 11. Refer to the drawings for details.
 12. Refer to the drawings for details.
 13. Refer to the drawings for details.
 14. Refer to the drawings for details.
 15. Refer to the drawings for details.
 16. Refer to the drawings for details.
 17. Refer to the drawings for details.
 18. Refer to the drawings for details.
 19. Refer to the drawings for details.
 20. Refer to the drawings for details.

| NO. | DESCRIPTION | DATE | BY | CHKD. |
|-----|-------------------------------|------------|----|-------|
| 01 | Issue for Planning Submission | 10/01/2020 | MM | MM |
| 02 | Issue for Planning Submission | 10/01/2020 | MM | MM |
| 03 | Issue for Planning Submission | 10/01/2020 | MM | MM |
| 04 | Issue for Planning Submission | 10/01/2020 | MM | MM |
| 05 | Issue for Planning Submission | 10/01/2020 | MM | MM |
| 06 | Issue for Planning Submission | 10/01/2020 | MM | MM |
| 07 | Issue for Planning Submission | 10/01/2020 | MM | MM |
| 08 | Issue for Planning Submission | 10/01/2020 | MM | MM |
| 09 | Issue for Planning Submission | 10/01/2020 | MM | MM |
| 10 | Issue for Planning Submission | 10/01/2020 | MM | MM |
| 11 | Issue for Planning Submission | 10/01/2020 | MM | MM |
| 12 | Issue for Planning Submission | 10/01/2020 | MM | MM |
| 13 | Issue for Planning Submission | 10/01/2020 | MM | MM |
| 14 | Issue for Planning Submission | 10/01/2020 | MM | MM |
| 15 | Issue for Planning Submission | 10/01/2020 | MM | MM |
| 16 | Issue for Planning Submission | 10/01/2020 | MM | MM |
| 17 | Issue for Planning Submission | 10/01/2020 | MM | MM |
| 18 | Issue for Planning Submission | 10/01/2020 | MM | MM |
| 19 | Issue for Planning Submission | 10/01/2020 | MM | MM |
| 20 | Issue for Planning Submission | 10/01/2020 | MM | MM |

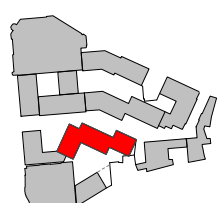
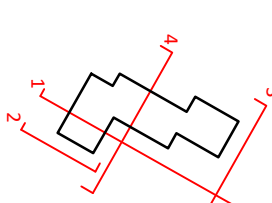


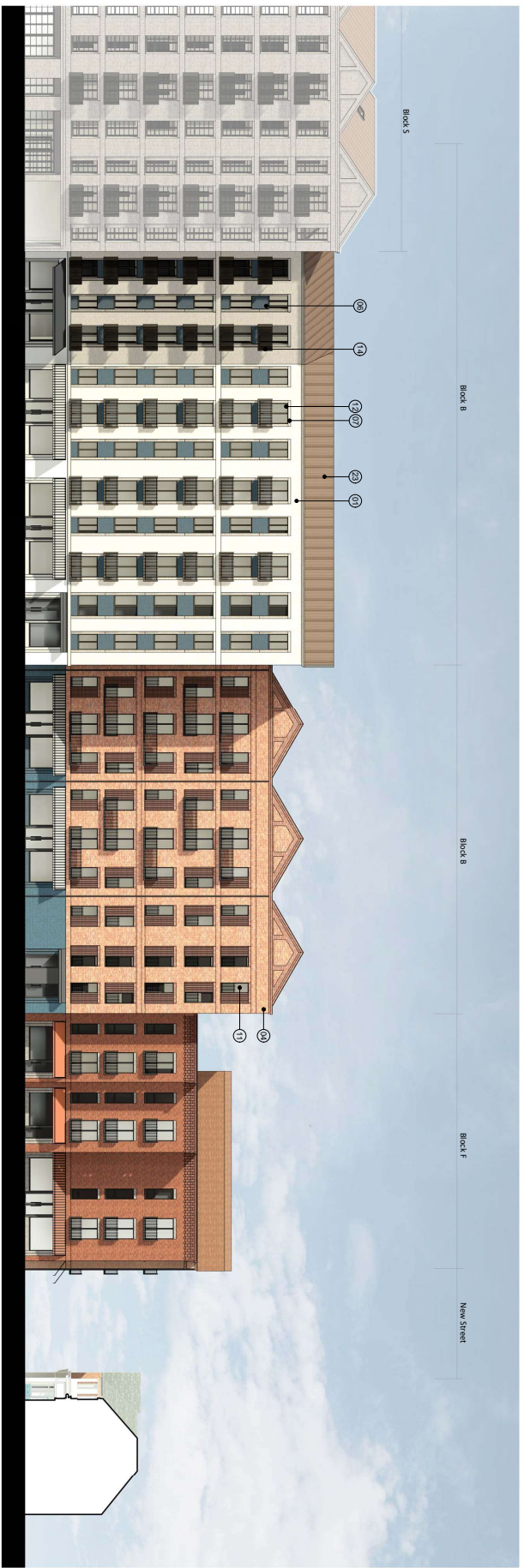
ColtadCollins Architects
 17-19 King Street, Suite 101, Newbury, Hampshire, RG14 5AA
 T: 01256 380237 F: 01256 380237
 www.coltadcollins.com 02031816111

LOCALLOFT
 Eagle Quarter, Newbury
 Proposed Elevations - Block A
 East and North
 PLANNING
 20011 P3-102

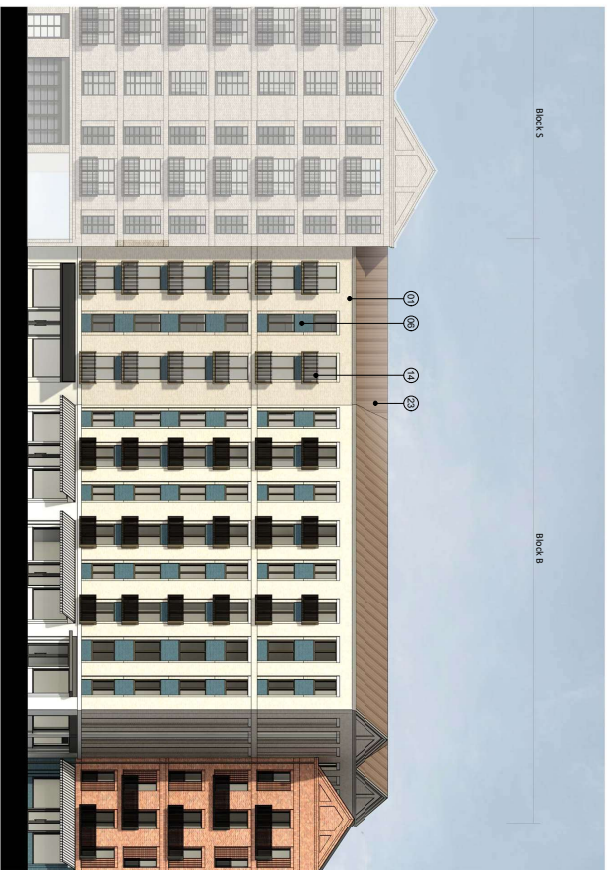
MATERIAL NOTES

- 01 Brick - Beige
- 02 Brick - Light Grey
- 03 Brick - Light Red
- 04 Brick - Red
- 05 Brick - Dark Red
- 06 Brick - Blue
- 07 GRC or similar - Light Grey
- 08 GRC or similar - Dull Pink
- 09 Roof Tiles
- 10 Standing Seam Metal Roof - Dark Grey
- 11 Window / Door Frame - Dark Grey
- 12 Window / Door Frame - Bronze Effect
- 13 Metal Beading / Details - Dark Grey
- 14 Metal Beading / Details - Bronze Effect
- 15 Expanded Mesh
- 16 Brick Detail to Parapet
- 17 White Render
- 18 Window / Door Frame - White
- 19 White GRC Detailing
- 20 Brick - Diamond Pattern
- 21 Day Hanging Wall Tiles
- 22 Window / Door Frame - Dark Green
- 23 Standing Seam Metal Roof - Dark Brown
- 24 Solid Panels to Sky Bridge
- 25 Light Grey Render
- 26 Obscure Glass Windows

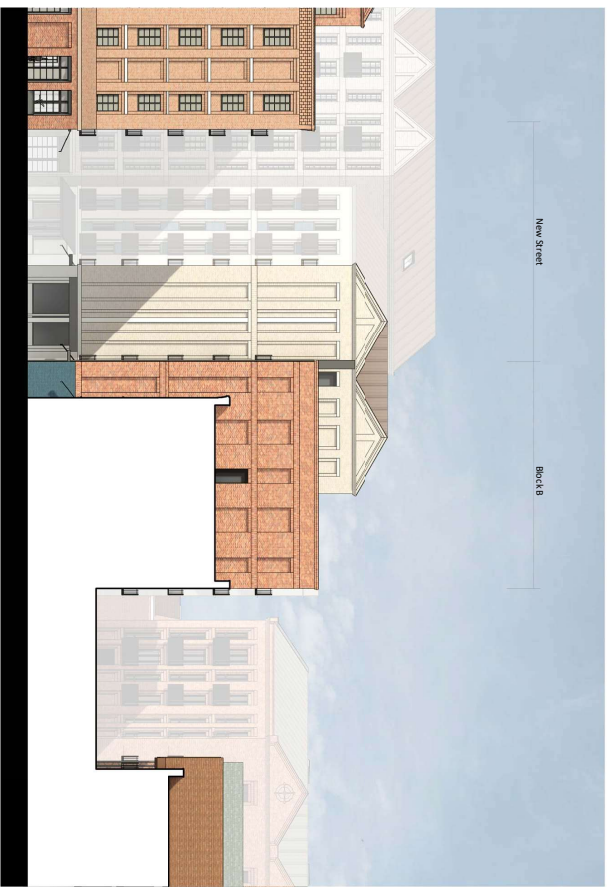




1 Block B - East (New Street) Elevation
1 : 200



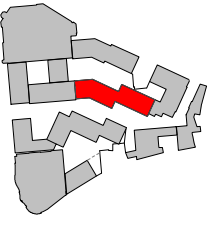
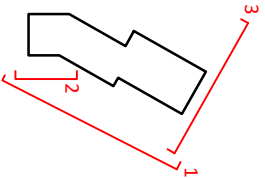
2 Block B - East Elevation 2
1 : 200



3 Block B - North Elevation
1 : 200

MATERIAL NOTES

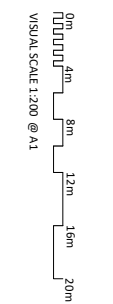
- 01 Brick - Beige
- 02 Brick - Light Grey
- 03 Brick - Light Red
- 04 Brick - Red
- 05 Brick - Dark Red
- 06 Brick - Blue
- 07 GRC or Similar - Light Grey
- 08 GRC or Similar - Dusty Pink
- 09 Board Tiles
- 10 Standing Seam Metal Roof - Dark Grey
- 11 Window / Door Frame - Dark Grey
- 12 Window / Door Frame - Bronze Effect
- 13 Metal Railing / Details - Dark Grey
- 14 Metal Railing / Details - Bronze Effect
- 15 Expanded Mesh
- 16 Brick Detail to Parapet
- 17 White Render
- 18 Window / Door Frame - White
- 19 White GRC Detailing
- 20 Brick - Diamond Pattern
- 21 Day Hanging Wallties
- 22 Window / Door Frame - Dark Green
- 23 Standing Seam Metal Roof - Dark Brown
- 24 Solid Panels to Sky Bridge
- 25 Light Grey Render
- 26 Obscure Glass Windows



NOTES

1. Refer to the main consultant's drawings for details
2. Refer to the package on site plan's drawings for details
3. Refer to the schedule

| NO. | REVISION | DATE | BY | CHK |
|-----|---------------------------------|------------|-----|-----|
| 01 | Issue for planning submission | 10/01/2020 | AMN | AMN |
| 02 | Revised for planning submission | 03/01/2021 | AMN | AMN |
| 03 | Final for planning submission | 05/01/2021 | AMN | AMN |
| 04 | Final for planning submission | 06/01/2021 | AMN | AMN |
| 05 | Final for planning submission | 07/01/2021 | AMN | AMN |
| 06 | Final for planning submission | 08/01/2021 | AMN | AMN |
| 07 | Final for planning submission | 09/01/2021 | AMN | AMN |
| 08 | Final for planning submission | 10/01/2021 | AMN | AMN |
| 09 | Final for planning submission | 11/01/2021 | AMN | AMN |
| 10 | Final for planning submission | 12/01/2021 | AMN | AMN |

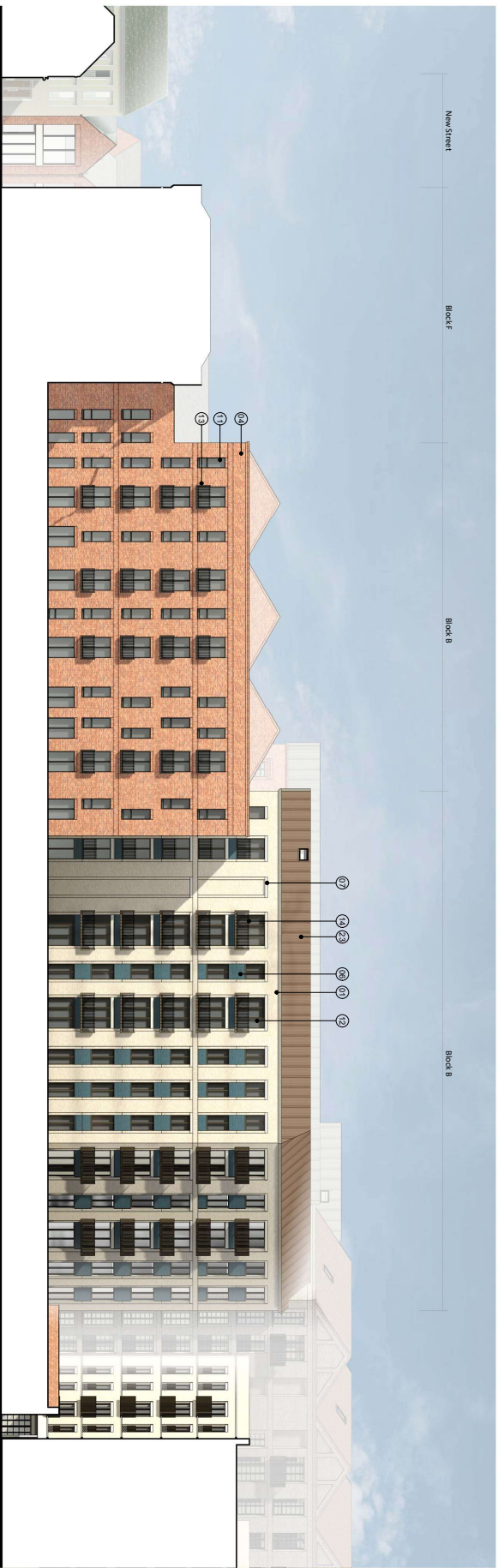


Colladocollins Architects

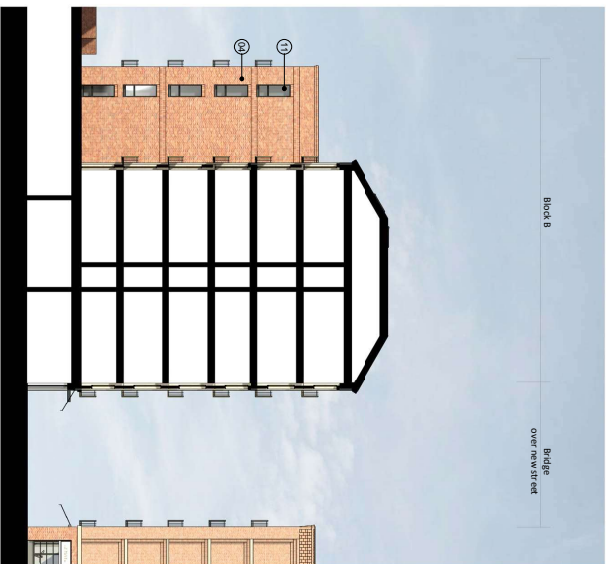
17-19 New Street
Newbury, Berkshire
RG14 2AA
Tel: 01344 840337
www.colladocollins.com

Date: 29/01/2020
Checked by: AMN
Drawn by: AMN

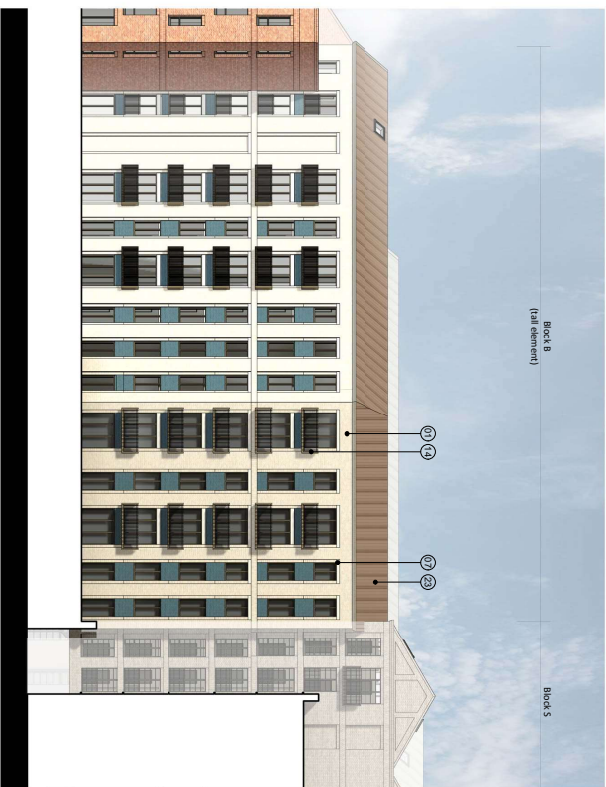
LOCALLOFT
Eagle Quarter, Newbury
Proposed Elevations - Block B
East and North
PLANNING
P3-103



1 Block B - Northwest Elevation
1 : 200



2 Block B - Southwest Elevation/Section
1 : 200



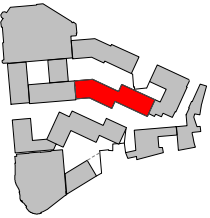
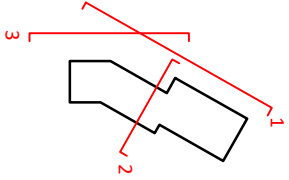
3 Block B - West Elevation
1 : 200



VISUAL SCALE 1:200 @ A1

MATERIAL NOTES

- 01 Brick - Beige
- 02 Brick - Light Grey
- 03 Brick - Light Red
- 04 Brick - Red
- 05 Brick - Dark Red
- 06 Brick - Blue
- 07 GRC or Similar - Light Grey
- 08 GRC or Similar - Dusty Pink
- 09 Bond Tiles
- 10 Standing Seam Metal Roof - Dark Grey
- 11 Window / Door Frame - Dark Grey
- 12 Window / Door Frame - Bronze Effect
- 13 Metal Railing / Details - Dark Grey
- 14 Metal Railing / Details - Bronze Effect
- 15 Expanded Mesh
- 16 Brick Detail to Parapet
- 17 White Bond
- 18 Window / Door Frame - White
- 19 White GRC Detailing
- 20 Brick - Diamond Pattern
- 21 Day Hanging Wall Tiles
- 22 Window / Door Frame - Dark Green
- 23 Standing Seam Metal Roof - Dark Brown
- 24 Solid Panels to Sky Bridge
- 25 Light Grey Kender
- 26 Obscure Glass Windows



NOTES

1. Refer to the main consultant's drawings for details.

2. Refer to the main consultant's drawings for details.

3. Refer to the main consultant's drawings for details.

4. Refer to the main consultant's drawings for details.

5. Refer to the main consultant's drawings for details.

6. Refer to the main consultant's drawings for details.

7. Refer to the main consultant's drawings for details.

8. Refer to the main consultant's drawings for details.

9. Refer to the main consultant's drawings for details.

10. Refer to the main consultant's drawings for details.

11. Refer to the main consultant's drawings for details.

12. Refer to the main consultant's drawings for details.

13. Refer to the main consultant's drawings for details.

14. Refer to the main consultant's drawings for details.

15. Refer to the main consultant's drawings for details.

16. Refer to the main consultant's drawings for details.

17. Refer to the main consultant's drawings for details.

18. Refer to the main consultant's drawings for details.

19. Refer to the main consultant's drawings for details.

20. Refer to the main consultant's drawings for details.

21. Refer to the main consultant's drawings for details.

22. Refer to the main consultant's drawings for details.

23. Refer to the main consultant's drawings for details.

24. Refer to the main consultant's drawings for details.

25. Refer to the main consultant's drawings for details.

26. Refer to the main consultant's drawings for details.

27. Refer to the main consultant's drawings for details.

28. Refer to the main consultant's drawings for details.

29. Refer to the main consultant's drawings for details.

30. Refer to the main consultant's drawings for details.

31. Refer to the main consultant's drawings for details.

32. Refer to the main consultant's drawings for details.

33. Refer to the main consultant's drawings for details.

34. Refer to the main consultant's drawings for details.

35. Refer to the main consultant's drawings for details.

36. Refer to the main consultant's drawings for details.

37. Refer to the main consultant's drawings for details.

38. Refer to the main consultant's drawings for details.

39. Refer to the main consultant's drawings for details.

40. Refer to the main consultant's drawings for details.

41. Refer to the main consultant's drawings for details.

42. Refer to the main consultant's drawings for details.

43. Refer to the main consultant's drawings for details.

44. Refer to the main consultant's drawings for details.

45. Refer to the main consultant's drawings for details.

46. Refer to the main consultant's drawings for details.

47. Refer to the main consultant's drawings for details.

48. Refer to the main consultant's drawings for details.

49. Refer to the main consultant's drawings for details.

50. Refer to the main consultant's drawings for details.

51. Refer to the main consultant's drawings for details.

52. Refer to the main consultant's drawings for details.

53. Refer to the main consultant's drawings for details.

54. Refer to the main consultant's drawings for details.

55. Refer to the main consultant's drawings for details.

56. Refer to the main consultant's drawings for details.

57. Refer to the main consultant's drawings for details.

58. Refer to the main consultant's drawings for details.

59. Refer to the main consultant's drawings for details.

60. Refer to the main consultant's drawings for details.

61. Refer to the main consultant's drawings for details.

62. Refer to the main consultant's drawings for details.

63. Refer to the main consultant's drawings for details.

64. Refer to the main consultant's drawings for details.

65. Refer to the main consultant's drawings for details.

66. Refer to the main consultant's drawings for details.

67. Refer to the main consultant's drawings for details.

68. Refer to the main consultant's drawings for details.

69. Refer to the main consultant's drawings for details.

70. Refer to the main consultant's drawings for details.

71. Refer to the main consultant's drawings for details.

72. Refer to the main consultant's drawings for details.

73. Refer to the main consultant's drawings for details.

74. Refer to the main consultant's drawings for details.

75. Refer to the main consultant's drawings for details.

76. Refer to the main consultant's drawings for details.

77. Refer to the main consultant's drawings for details.

78. Refer to the main consultant's drawings for details.

79. Refer to the main consultant's drawings for details.

80. Refer to the main consultant's drawings for details.

81. Refer to the main consultant's drawings for details.

82. Refer to the main consultant's drawings for details.

83. Refer to the main consultant's drawings for details.

84. Refer to the main consultant's drawings for details.

85. Refer to the main consultant's drawings for details.

86. Refer to the main consultant's drawings for details.

87. Refer to the main consultant's drawings for details.

88. Refer to the main consultant's drawings for details.

89. Refer to the main consultant's drawings for details.

90. Refer to the main consultant's drawings for details.

91. Refer to the main consultant's drawings for details.

92. Refer to the main consultant's drawings for details.

93. Refer to the main consultant's drawings for details.

94. Refer to the main consultant's drawings for details.

95. Refer to the main consultant's drawings for details.

96. Refer to the main consultant's drawings for details.

97. Refer to the main consultant's drawings for details.

98. Refer to the main consultant's drawings for details.

99. Refer to the main consultant's drawings for details.

100. Refer to the main consultant's drawings for details.

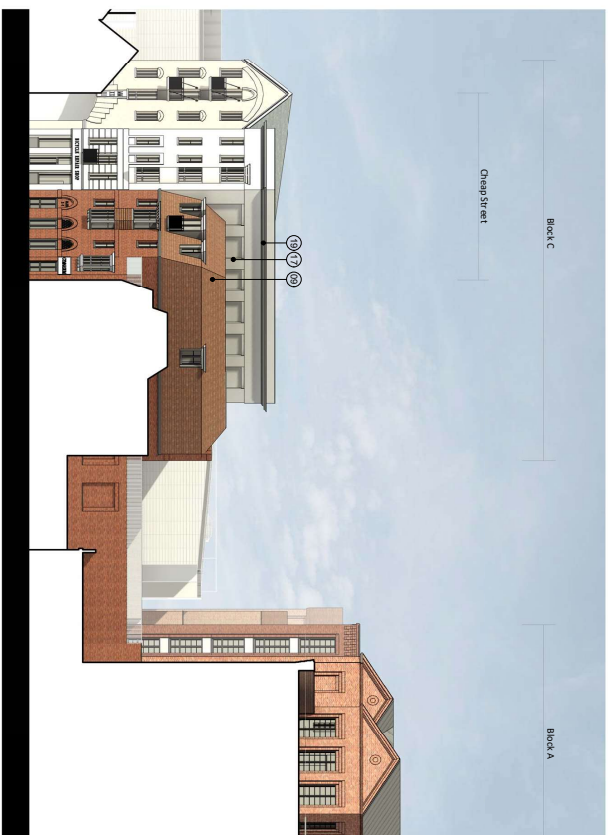
Colladocollins Architects

17-19 King Street
 Eagle Quarter, Newbury
 West and South
 Planning
 P3-104

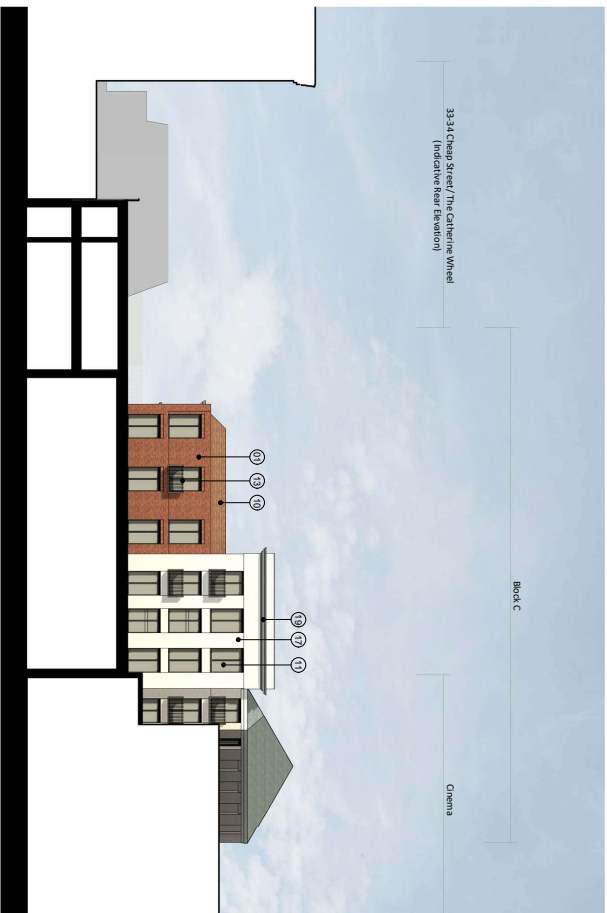
20/10/2020
 Eagle Quarter, Newbury
 West and South
 Planning
 P3-104



1 Block C - East (Cheaps Street) Elevation
1 : 200



2 Block C - North Elevation
1 : 200

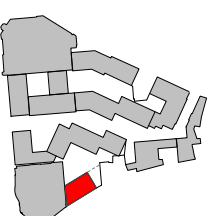
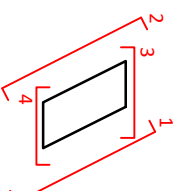


3 Block C - West (Rear) Elevation
1 : 200



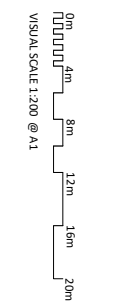
4 Block C - South Elevation (Cinema Boundary)
1 : 200

- MATERIAL NOTES**
- 17 Brick - Beige
 - 18 Brick - Light Grey
 - 19 Brick - Light Red
 - 20 Brick - Red
 - 21 Brick - Dark Red
 - 22 Brick - Blue
 - 23 GRC or similar - Light Grey
 - 24 GRC or similar - Dusky Pink
 - 25 Roof Tiles
 - 26 Standing Seam Metal Roof - Dark Grey
 - 27 Window / Door Frame - Dark Grey
 - 28 Window / Door Frame - Bronze Effect
 - 29 Metal Beiling / Details - Dark Grey
 - 30 Metal Beiling / Details - Bronze Effect
 - 31 Expanded Mesh
 - 32 Brick Detail to Parapet
 - 33 White Render
 - 34 Window/ Door Frame - White
 - 35 White GRC Detailing
 - 36 Brick - Diamond Pattern
 - 37 Clay Hanging Wall Tiles
 - 38 Window/ Door Frame - Dark Green
 - 39 Standing Seam Metal Roof - Dark Brown
 - 40 Solid Panels to sky bridge
 - 41 Light Grey Render
 - 42 Obscure Glass Windows



NOTES

1. Refer to the program consultant drawings for details
2. Refer to the program consultant drawings for details
3. Refer to the program consultant drawings for details
4. Refer to the program consultant drawings for details
5. Refer to the program consultant drawings for details
6. Refer to the program consultant drawings for details
7. Refer to the program consultant drawings for details
8. Refer to the program consultant drawings for details
9. Refer to the program consultant drawings for details
10. Refer to the program consultant drawings for details
11. Refer to the program consultant drawings for details
12. Refer to the program consultant drawings for details
13. Refer to the program consultant drawings for details
14. Refer to the program consultant drawings for details
15. Refer to the program consultant drawings for details
16. Refer to the program consultant drawings for details
17. Refer to the program consultant drawings for details
18. Refer to the program consultant drawings for details
19. Refer to the program consultant drawings for details
20. Refer to the program consultant drawings for details
21. Refer to the program consultant drawings for details
22. Refer to the program consultant drawings for details
23. Refer to the program consultant drawings for details
24. Refer to the program consultant drawings for details
25. Refer to the program consultant drawings for details
26. Refer to the program consultant drawings for details
27. Refer to the program consultant drawings for details
28. Refer to the program consultant drawings for details
29. Refer to the program consultant drawings for details
30. Refer to the program consultant drawings for details
31. Refer to the program consultant drawings for details
32. Refer to the program consultant drawings for details
33. Refer to the program consultant drawings for details
34. Refer to the program consultant drawings for details
35. Refer to the program consultant drawings for details
36. Refer to the program consultant drawings for details
37. Refer to the program consultant drawings for details
38. Refer to the program consultant drawings for details
39. Refer to the program consultant drawings for details
40. Refer to the program consultant drawings for details
41. Refer to the program consultant drawings for details
42. Refer to the program consultant drawings for details
43. Refer to the program consultant drawings for details
44. Refer to the program consultant drawings for details
45. Refer to the program consultant drawings for details
46. Refer to the program consultant drawings for details
47. Refer to the program consultant drawings for details
48. Refer to the program consultant drawings for details
49. Refer to the program consultant drawings for details
50. Refer to the program consultant drawings for details
51. Refer to the program consultant drawings for details
52. Refer to the program consultant drawings for details
53. Refer to the program consultant drawings for details
54. Refer to the program consultant drawings for details
55. Refer to the program consultant drawings for details
56. Refer to the program consultant drawings for details
57. Refer to the program consultant drawings for details
58. Refer to the program consultant drawings for details
59. Refer to the program consultant drawings for details
60. Refer to the program consultant drawings for details
61. Refer to the program consultant drawings for details
62. Refer to the program consultant drawings for details
63. Refer to the program consultant drawings for details
64. Refer to the program consultant drawings for details
65. Refer to the program consultant drawings for details
66. Refer to the program consultant drawings for details
67. Refer to the program consultant drawings for details
68. Refer to the program consultant drawings for details
69. Refer to the program consultant drawings for details
70. Refer to the program consultant drawings for details
71. Refer to the program consultant drawings for details
72. Refer to the program consultant drawings for details
73. Refer to the program consultant drawings for details
74. Refer to the program consultant drawings for details
75. Refer to the program consultant drawings for details
76. Refer to the program consultant drawings for details
77. Refer to the program consultant drawings for details
78. Refer to the program consultant drawings for details
79. Refer to the program consultant drawings for details
80. Refer to the program consultant drawings for details
81. Refer to the program consultant drawings for details
82. Refer to the program consultant drawings for details
83. Refer to the program consultant drawings for details
84. Refer to the program consultant drawings for details
85. Refer to the program consultant drawings for details
86. Refer to the program consultant drawings for details
87. Refer to the program consultant drawings for details
88. Refer to the program consultant drawings for details
89. Refer to the program consultant drawings for details
90. Refer to the program consultant drawings for details
91. Refer to the program consultant drawings for details
92. Refer to the program consultant drawings for details
93. Refer to the program consultant drawings for details
94. Refer to the program consultant drawings for details
95. Refer to the program consultant drawings for details
96. Refer to the program consultant drawings for details
97. Refer to the program consultant drawings for details
98. Refer to the program consultant drawings for details
99. Refer to the program consultant drawings for details
100. Refer to the program consultant drawings for details

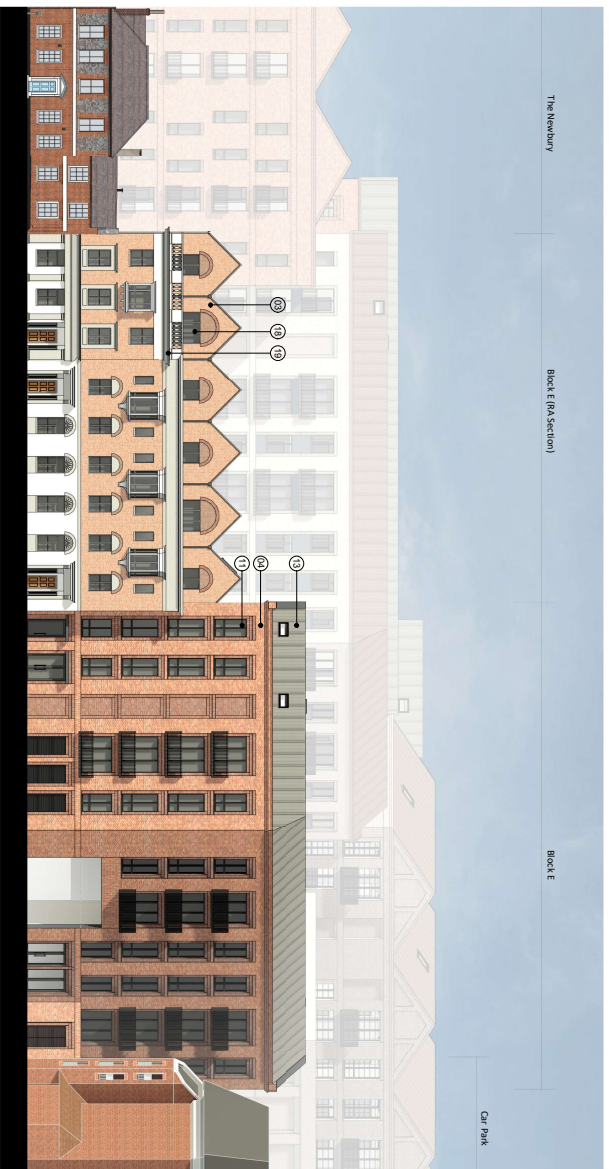


Colladocollins Architects

13/101/04/15/04/06 Date: 29/01/2020
 17/101/04/15/04/06 Drawn by: J. Collins
 17/101/04/15/04/06 Checked by: J. Collins
 17/101/04/15/04/06 Approved by: J. Collins
 www.colladocollins.com 0201816111 1 100

LOCALLOFT
 Eagle Quarter, Newbury
 Proposed Elevations - Block C
 PLANNING P3-105
 20011





1 Block E - West (Bartholomew Street) Elevation
1 : 200



3 Block E - East (Courtyard Podium) Elevation
1 : 200



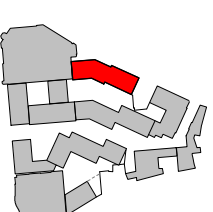
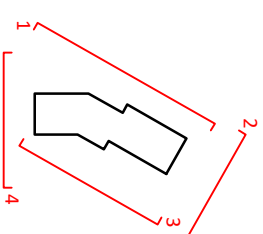
2 Block E - North Elevation
1 : 200



4 Block E - South Elevation
1 : 200

MATERIAL NOTES

- 17 Brick - Beige
- 18 Brick - Light Grey
- 19 Brick - Light Red
- 20 Brick - Red
- 21 Brick - Dark Red
- 22 Brick - Blue
- 23 GRC or similar - Light Grey
- 24 GRC or similar - Dark Grey
- 25 GRC or similar - Dark Brown
- 26 Roof Tiles
- 27 Standing Seam Metal Roof - Dark Grey
- 28 Window / Door Frame - Dark Grey
- 29 Window / Door Frame - Bronze Effect
- 30 Metal Sillings / Details - Dark Grey
- 31 Metal Sillings / Details - Bronze Effect
- 32 Expanded Mesh
- 33 Brick Detail to Parapet
- 34 White Render
- 35 Window / Door Frame - White
- 36 White GRC Detailing
- 37 Brick - Diamond Pattern
- 38 Clay Hanging Wall Tiles
- 39 Window / Door Frame - Dark Green
- 40 Standing Seam Metal Roof - Dark Brown
- 41 Solid Panels to Sky Bridge
- 42 Light Grey Render
- 43 Obscure Glass Windows



NOTES

1. Refer to the design consultant's drawings for details.

2. Refer to the design consultant's drawings for details.

3. Refer to the design consultant's drawings for details.

4. Refer to the design consultant's drawings for details.

5. Refer to the design consultant's drawings for details.

6. Refer to the design consultant's drawings for details.

7. Refer to the design consultant's drawings for details.

8. Refer to the design consultant's drawings for details.

9. Refer to the design consultant's drawings for details.

10. Refer to the design consultant's drawings for details.

11. Refer to the design consultant's drawings for details.

12. Refer to the design consultant's drawings for details.

13. Refer to the design consultant's drawings for details.

14. Refer to the design consultant's drawings for details.

15. Refer to the design consultant's drawings for details.

16. Refer to the design consultant's drawings for details.

17. Refer to the design consultant's drawings for details.

18. Refer to the design consultant's drawings for details.

19. Refer to the design consultant's drawings for details.

20. Refer to the design consultant's drawings for details.

21. Refer to the design consultant's drawings for details.

22. Refer to the design consultant's drawings for details.

23. Refer to the design consultant's drawings for details.

24. Refer to the design consultant's drawings for details.

25. Refer to the design consultant's drawings for details.

26. Refer to the design consultant's drawings for details.

27. Refer to the design consultant's drawings for details.

28. Refer to the design consultant's drawings for details.

29. Refer to the design consultant's drawings for details.

30. Refer to the design consultant's drawings for details.

31. Refer to the design consultant's drawings for details.

32. Refer to the design consultant's drawings for details.

33. Refer to the design consultant's drawings for details.

34. Refer to the design consultant's drawings for details.

35. Refer to the design consultant's drawings for details.

36. Refer to the design consultant's drawings for details.

37. Refer to the design consultant's drawings for details.

38. Refer to the design consultant's drawings for details.

39. Refer to the design consultant's drawings for details.

40. Refer to the design consultant's drawings for details.

41. Refer to the design consultant's drawings for details.

42. Refer to the design consultant's drawings for details.

43. Refer to the design consultant's drawings for details.

44. Refer to the design consultant's drawings for details.

45. Refer to the design consultant's drawings for details.

46. Refer to the design consultant's drawings for details.

47. Refer to the design consultant's drawings for details.

48. Refer to the design consultant's drawings for details.

49. Refer to the design consultant's drawings for details.

50. Refer to the design consultant's drawings for details.

| NO. | REVISION | DATE | BY | CHKD. |
|-----|---------------------------|------------|----|-------|
| 01 | Initial Design Submission | 13/07/2020 | AK | AK |
| 02 | Revised Design Submission | 14/07/2020 | AK | AK |
| 03 | Final Design Submission | 15/07/2020 | AK | AK |
| 04 | Approved for Construction | 16/07/2020 | AK | AK |
| 05 | Approved for Construction | 17/07/2020 | AK | AK |
| 06 | Approved for Construction | 18/07/2020 | AK | AK |
| 07 | Approved for Construction | 19/07/2020 | AK | AK |
| 08 | Approved for Construction | 20/07/2020 | AK | AK |
| 09 | Approved for Construction | 21/07/2020 | AK | AK |
| 10 | Approved for Construction | 22/07/2020 | AK | AK |
| 11 | Approved for Construction | 23/07/2020 | AK | AK |
| 12 | Approved for Construction | 24/07/2020 | AK | AK |
| 13 | Approved for Construction | 25/07/2020 | AK | AK |
| 14 | Approved for Construction | 26/07/2020 | AK | AK |
| 15 | Approved for Construction | 27/07/2020 | AK | AK |
| 16 | Approved for Construction | 28/07/2020 | AK | AK |
| 17 | Approved for Construction | 29/07/2020 | AK | AK |
| 18 | Approved for Construction | 30/07/2020 | AK | AK |
| 19 | Approved for Construction | 31/07/2020 | AK | AK |
| 20 | Approved for Construction | 01/08/2020 | AK | AK |
| 21 | Approved for Construction | 02/08/2020 | AK | AK |
| 22 | Approved for Construction | 03/08/2020 | AK | AK |
| 23 | Approved for Construction | 04/08/2020 | AK | AK |
| 24 | Approved for Construction | 05/08/2020 | AK | AK |
| 25 | Approved for Construction | 06/08/2020 | AK | AK |
| 26 | Approved for Construction | 07/08/2020 | AK | AK |
| 27 | Approved for Construction | 08/08/2020 | AK | AK |
| 28 | Approved for Construction | 09/08/2020 | AK | AK |
| 29 | Approved for Construction | 10/08/2020 | AK | AK |
| 30 | Approved for Construction | 11/08/2020 | AK | AK |
| 31 | Approved for Construction | 12/08/2020 | AK | AK |
| 32 | Approved for Construction | 13/08/2020 | AK | AK |
| 33 | Approved for Construction | 14/08/2020 | AK | AK |
| 34 | Approved for Construction | 15/08/2020 | AK | AK |
| 35 | Approved for Construction | 16/08/2020 | AK | AK |
| 36 | Approved for Construction | 17/08/2020 | AK | AK |
| 37 | Approved for Construction | 18/08/2020 | AK | AK |
| 38 | Approved for Construction | 19/08/2020 | AK | AK |
| 39 | Approved for Construction | 20/08/2020 | AK | AK |
| 40 | Approved for Construction | 21/08/2020 | AK | AK |
| 41 | Approved for Construction | 22/08/2020 | AK | AK |
| 42 | Approved for Construction | 23/08/2020 | AK | AK |
| 43 | Approved for Construction | 24/08/2020 | AK | AK |
| 44 | Approved for Construction | 25/08/2020 | AK | AK |
| 45 | Approved for Construction | 26/08/2020 | AK | AK |
| 46 | Approved for Construction | 27/08/2020 | AK | AK |
| 47 | Approved for Construction | 28/08/2020 | AK | AK |
| 48 | Approved for Construction | 29/08/2020 | AK | AK |
| 49 | Approved for Construction | 30/08/2020 | AK | AK |
| 50 | Approved for Construction | 31/08/2020 | AK | AK |

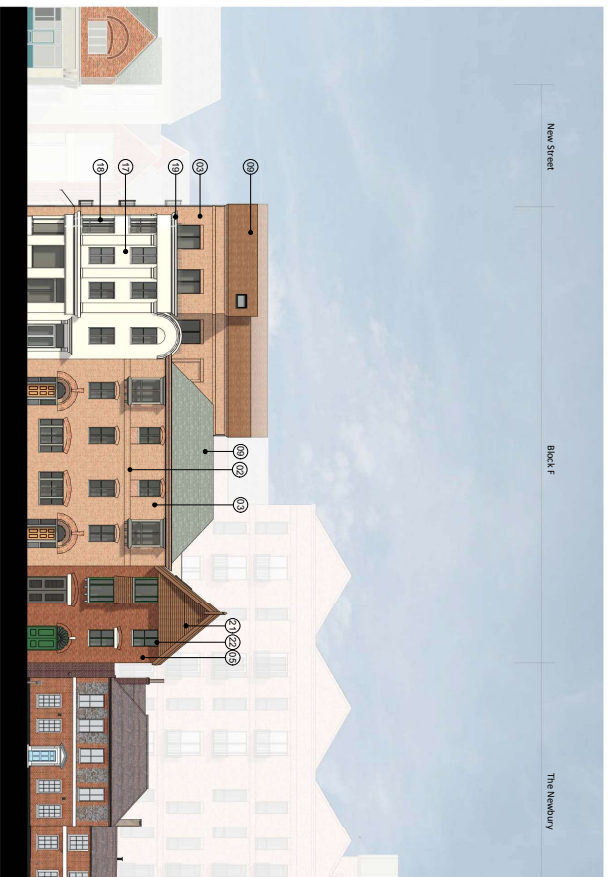
Colladocollins Architects

13/101 4th Street, Suite 100, Newbury, KY 40058
 Phone: 502.338.3377 Fax: 502.338.3377
 www.colladocollins.com COLLADOCOLLS ARCHITECTS

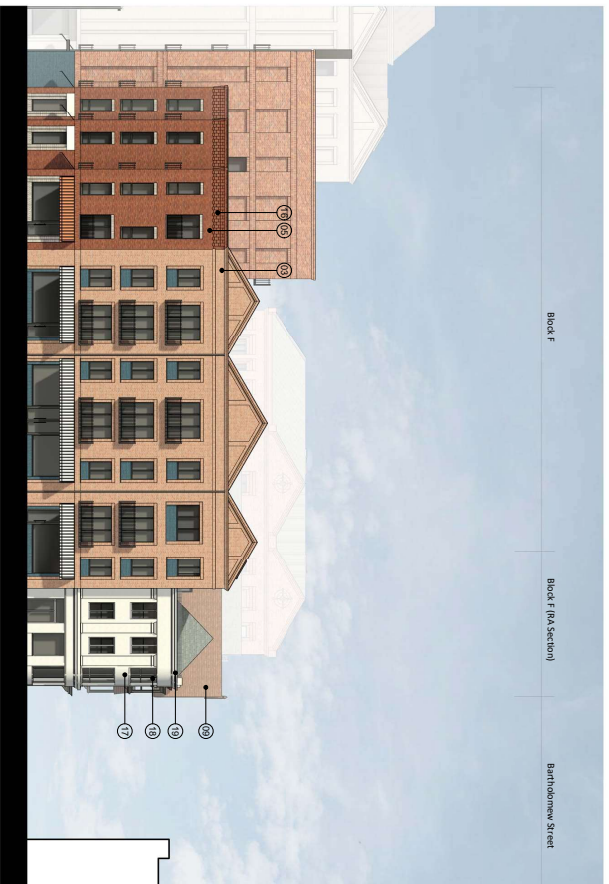
DATE: 29/07/2020
 DRAWN BY: AK
 CHECKED BY: AK

LOCALLOFT
 Eagle Quarter, Newbury
 Proposed Elevations - Block E
 PLANNING P3-108
 20011

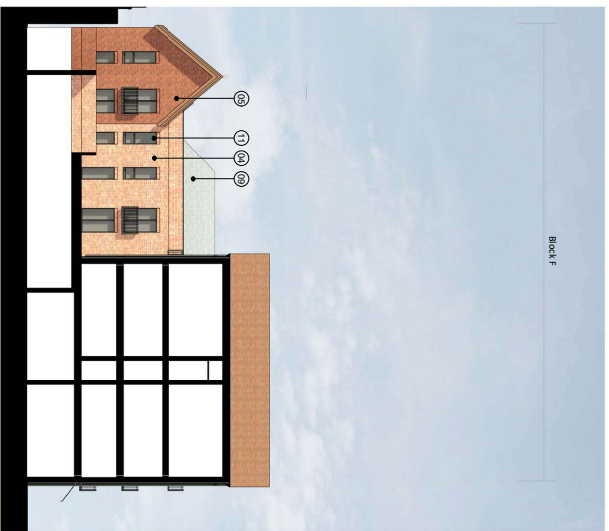




1 Block F - West (Bartholomew Street) Elevation
1 : 200



2 Block F - North (New Street) Elevation
1 : 200



3 Block F - East Elevation/ Section
1 : 200

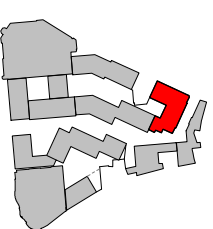
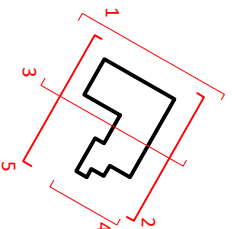


4 Block F - East Elevation
1 : 200



5 Block F - South Elevation/ Section
1 : 200

- MATERIAL NOTES**
- 01 Brick - Beige
 - 02 Brick - Light Grey
 - 03 Brick - Light Red
 - 04 Brick - Red
 - 05 Brick - Dark Red
 - 06 Brick - Blue
 - 07 GRC or similar - Light Grey
 - 08 GRC or similar - Dusky Pink
 - 09 Roof Tiles
 - 10 Standing Seam Metal Roof - Dark Grey
 - 11 Window /Door Frame - Dark Grey
 - 12 Window /Door Frame - Bronze Effect
 - 13 Metal Beiling /Details - Dark Grey
 - 14 Metal Railing /Details - Bronze Effect
 - 15 Expanded Mesh
 - 16 Brick Detail to Parapet
 - 17 White Render
 - 18 Window /Door Frame - White
 - 19 White GRC Detailing
 - 20 Brick - Diamond Pattern
 - 21 Clay Hanging Wall Tiles
 - 22 Window /Door Frame - Dark Green
 - 23 Standing Seam Metal Roof - Dark Brown
 - 24 Solid Panels to sky bridge
 - 25 Light Grey Kender
 - 26 Obscure Glass Windows



NOTES

1. Refer to drawings consultant's drawings for details
2. Refer to landscape on site's drawings for details
3. Refer to site schedule

© Copyright Kiewit Construction Agreement Ltd

| NO. | REVISION | DATE | BY | CHK |
|-----|-------------------------------|------------|----|-----|
| 01 | Issue for planning submission | 10/09/2020 | AK | AK |
| 02 | Revised drawing | 03/09/2021 | AK | AK |
| 03 | Final drawing | 09/09/2021 | AK | AK |
| 04 | Final drawing | 09/09/2021 | AK | AK |
| 05 | Final drawing | 09/09/2021 | AK | AK |
| 06 | Final drawing | 09/09/2021 | AK | AK |
| 07 | Final drawing | 09/09/2021 | AK | AK |
| 08 | Final drawing | 09/09/2021 | AK | AK |
| 09 | Final drawing | 09/09/2021 | AK | AK |
| 10 | Final drawing | 09/09/2021 | AK | AK |
| 11 | Final drawing | 09/09/2021 | AK | AK |
| 12 | Final drawing | 09/09/2021 | AK | AK |
| 13 | Final drawing | 09/09/2021 | AK | AK |
| 14 | Final drawing | 09/09/2021 | AK | AK |
| 15 | Final drawing | 09/09/2021 | AK | AK |
| 16 | Final drawing | 09/09/2021 | AK | AK |
| 17 | Final drawing | 09/09/2021 | AK | AK |
| 18 | Final drawing | 09/09/2021 | AK | AK |
| 19 | Final drawing | 09/09/2021 | AK | AK |
| 20 | Final drawing | 09/09/2021 | AK | AK |
| 21 | Final drawing | 09/09/2021 | AK | AK |
| 22 | Final drawing | 09/09/2021 | AK | AK |
| 23 | Final drawing | 09/09/2021 | AK | AK |
| 24 | Final drawing | 09/09/2021 | AK | AK |
| 25 | Final drawing | 09/09/2021 | AK | AK |
| 26 | Final drawing | 09/09/2021 | AK | AK |
| 27 | Final drawing | 09/09/2021 | AK | AK |
| 28 | Final drawing | 09/09/2021 | AK | AK |
| 29 | Final drawing | 09/09/2021 | AK | AK |
| 30 | Final drawing | 09/09/2021 | AK | AK |
| 31 | Final drawing | 09/09/2021 | AK | AK |
| 32 | Final drawing | 09/09/2021 | AK | AK |
| 33 | Final drawing | 09/09/2021 | AK | AK |
| 34 | Final drawing | 09/09/2021 | AK | AK |
| 35 | Final drawing | 09/09/2021 | AK | AK |
| 36 | Final drawing | 09/09/2021 | AK | AK |
| 37 | Final drawing | 09/09/2021 | AK | AK |
| 38 | Final drawing | 09/09/2021 | AK | AK |
| 39 | Final drawing | 09/09/2021 | AK | AK |
| 40 | Final drawing | 09/09/2021 | AK | AK |
| 41 | Final drawing | 09/09/2021 | AK | AK |
| 42 | Final drawing | 09/09/2021 | AK | AK |
| 43 | Final drawing | 09/09/2021 | AK | AK |
| 44 | Final drawing | 09/09/2021 | AK | AK |
| 45 | Final drawing | 09/09/2021 | AK | AK |
| 46 | Final drawing | 09/09/2021 | AK | AK |
| 47 | Final drawing | 09/09/2021 | AK | AK |
| 48 | Final drawing | 09/09/2021 | AK | AK |
| 49 | Final drawing | 09/09/2021 | AK | AK |
| 50 | Final drawing | 09/09/2021 | AK | AK |
| 51 | Final drawing | 09/09/2021 | AK | AK |
| 52 | Final drawing | 09/09/2021 | AK | AK |
| 53 | Final drawing | 09/09/2021 | AK | AK |
| 54 | Final drawing | 09/09/2021 | AK | AK |
| 55 | Final drawing | 09/09/2021 | AK | AK |
| 56 | Final drawing | 09/09/2021 | AK | AK |
| 57 | Final drawing | 09/09/2021 | AK | AK |
| 58 | Final drawing | 09/09/2021 | AK | AK |
| 59 | Final drawing | 09/09/2021 | AK | AK |
| 60 | Final drawing | 09/09/2021 | AK | AK |
| 61 | Final drawing | 09/09/2021 | AK | AK |
| 62 | Final drawing | 09/09/2021 | AK | AK |
| 63 | Final drawing | 09/09/2021 | AK | AK |
| 64 | Final drawing | 09/09/2021 | AK | AK |
| 65 | Final drawing | 09/09/2021 | AK | AK |
| 66 | Final drawing | 09/09/2021 | AK | AK |
| 67 | Final drawing | 09/09/2021 | AK | AK |
| 68 | Final drawing | 09/09/2021 | AK | AK |
| 69 | Final drawing | 09/09/2021 | AK | AK |
| 70 | Final drawing | 09/09/2021 | AK | AK |
| 71 | Final drawing | 09/09/2021 | AK | AK |
| 72 | Final drawing | 09/09/2021 | AK | AK |
| 73 | Final drawing | 09/09/2021 | AK | AK |
| 74 | Final drawing | 09/09/2021 | AK | AK |
| 75 | Final drawing | 09/09/2021 | AK | AK |
| 76 | Final drawing | 09/09/2021 | AK | AK |
| 77 | Final drawing | 09/09/2021 | AK | AK |
| 78 | Final drawing | 09/09/2021 | AK | AK |
| 79 | Final drawing | 09/09/2021 | AK | AK |
| 80 | Final drawing | 09/09/2021 | AK | AK |
| 81 | Final drawing | 09/09/2021 | AK | AK |
| 82 | Final drawing | 09/09/2021 | AK | AK |
| 83 | Final drawing | 09/09/2021 | AK | AK |
| 84 | Final drawing | 09/09/2021 | AK | AK |
| 85 | Final drawing | 09/09/2021 | AK | AK |
| 86 | Final drawing | 09/09/2021 | AK | AK |
| 87 | Final drawing | 09/09/2021 | AK | AK |
| 88 | Final drawing | 09/09/2021 | AK | AK |
| 89 | Final drawing | 09/09/2021 | AK | AK |
| 90 | Final drawing | 09/09/2021 | AK | AK |
| 91 | Final drawing | 09/09/2021 | AK | AK |
| 92 | Final drawing | 09/09/2021 | AK | AK |
| 93 | Final drawing | 09/09/2021 | AK | AK |
| 94 | Final drawing | 09/09/2021 | AK | AK |
| 95 | Final drawing | 09/09/2021 | AK | AK |
| 96 | Final drawing | 09/09/2021 | AK | AK |
| 97 | Final drawing | 09/09/2021 | AK | AK |
| 98 | Final drawing | 09/09/2021 | AK | AK |
| 99 | Final drawing | 09/09/2021 | AK | AK |
| 100 | Final drawing | 09/09/2021 | AK | AK |

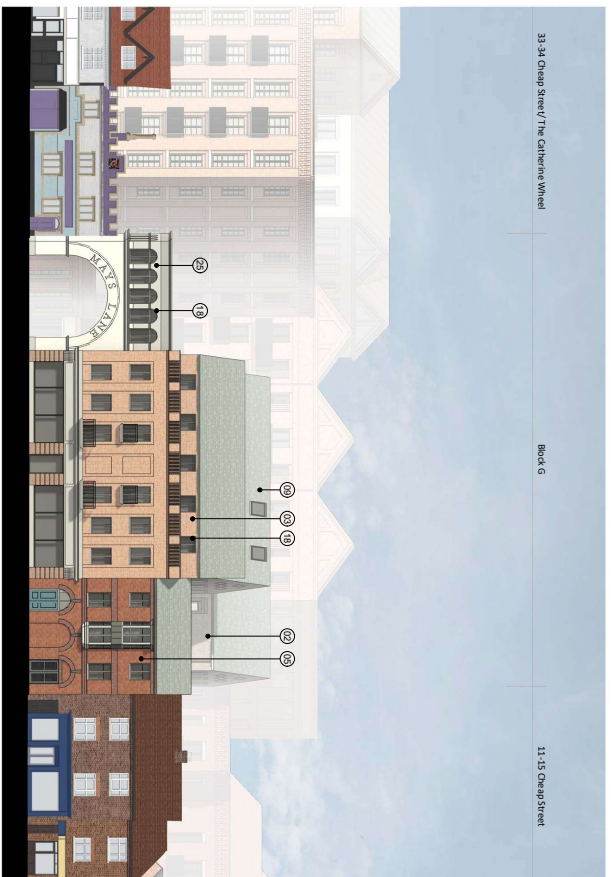
Colladocollins Architects

13, 1511 4th Street, Suite 100, Newbury, NC 27040
 P: 703.582.3377 F: 703.582.3480
 www.colladocollins.com COLLADOCOLLINS ARCHITECTS

DATE: 29/01/2020
 DRAWN BY: AK
 CHECKED BY: AK

LOCALLOFT
 Eagle Quarter, Newbury
 Proposed Elevations - Block F
 PLANNING P3-109
 20011

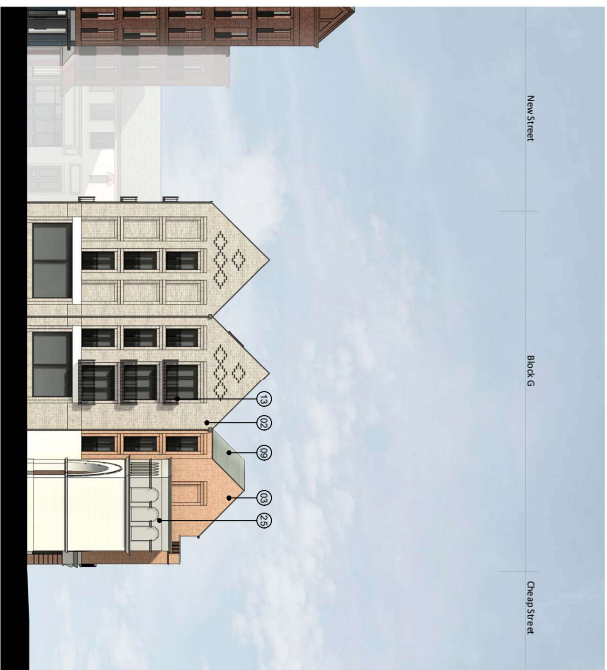
PC
 200111



1 Block G - East (Cheap Street) Elevation
1 : 200



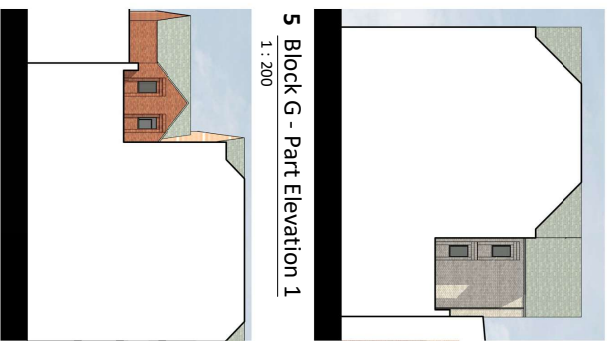
2 Block G - West (New Street) Elevation
1 : 200



3 Block G - South (Mays Lane) Elevation
1 : 200



4 Block G - North Elevation
1 : 200



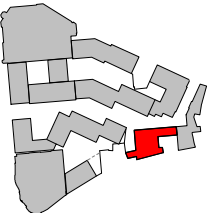
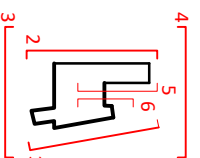
5 Block G - Part Elevation 1
1 : 200



6 Block G - Part Elevation 2
1 : 200

MATERIAL NOTES

- 17 Brick - Range
- 18 Brick - Light Grey
- 19 Brick - Light Red
- 20 Brick - Red
- 21 Brick - Dark Red
- 22 Brick - Blue
- 23 GRC or Similar - Light Grey
- 24 GRC or Similar - Dusky Pink
- 25 Roof Tiles
- 26 Standing Seam Metal Roof - Dark Grey
- 27 Window / Door Frame - Dark Grey
- 28 Window / Door Frame - Bronze Effect
- 29 Metal Siding / Details - Dark Grey
- 30 Metal Siding / Details - Bronze Effect
- 31 Expanded Mesh
- 32 Brick Detail to Parapet
- 33 White Render
- 34 Window / Door Frame - White
- 35 White GRC Detailing
- 36 Brick - Diamond Pattern
- 37 Clay Hanging Wall Tiles
- 38 Window / Door Frame - Dark Green
- 39 Standing Seam Metal Roof - Dark Brown
- 40 Solid Panels to Sky Bridge
- 41 Light Grey Render
- 42 Obscure Glass Windows



NOTES

1. Refer to the design consultants drawings for details
2. Refer to the design consultants drawings for details
3. Refer to the design consultants drawings for details
4. Refer to the design consultants drawings for details
5. Refer to the design consultants drawings for details
6. Refer to the design consultants drawings for details
7. Refer to the design consultants drawings for details
8. Refer to the design consultants drawings for details
9. Refer to the design consultants drawings for details
10. Refer to the design consultants drawings for details
11. Refer to the design consultants drawings for details
12. Refer to the design consultants drawings for details
13. Refer to the design consultants drawings for details
14. Refer to the design consultants drawings for details
15. Refer to the design consultants drawings for details
16. Refer to the design consultants drawings for details
17. Refer to the design consultants drawings for details
18. Refer to the design consultants drawings for details
19. Refer to the design consultants drawings for details
20. Refer to the design consultants drawings for details
21. Refer to the design consultants drawings for details
22. Refer to the design consultants drawings for details
23. Refer to the design consultants drawings for details
24. Refer to the design consultants drawings for details
25. Refer to the design consultants drawings for details
26. Refer to the design consultants drawings for details
27. Refer to the design consultants drawings for details
28. Refer to the design consultants drawings for details
29. Refer to the design consultants drawings for details
30. Refer to the design consultants drawings for details
31. Refer to the design consultants drawings for details
32. Refer to the design consultants drawings for details
33. Refer to the design consultants drawings for details
34. Refer to the design consultants drawings for details
35. Refer to the design consultants drawings for details
36. Refer to the design consultants drawings for details
37. Refer to the design consultants drawings for details
38. Refer to the design consultants drawings for details
39. Refer to the design consultants drawings for details
40. Refer to the design consultants drawings for details
41. Refer to the design consultants drawings for details
42. Refer to the design consultants drawings for details

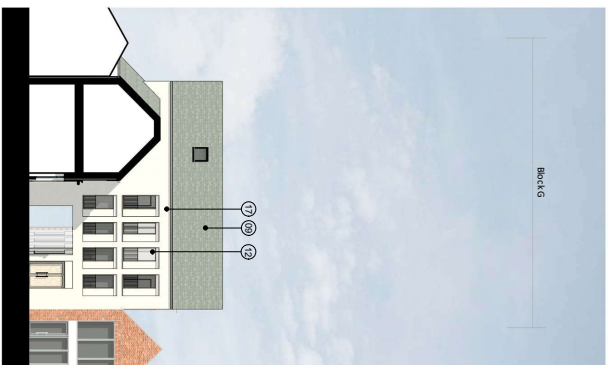
Colladocollins Architects

13-19 Chapel Street, Eagle Quarter, Newbury
 T 01357 390 937 F 01357 390 940
 www.colladocollins.com 0201816 1 199

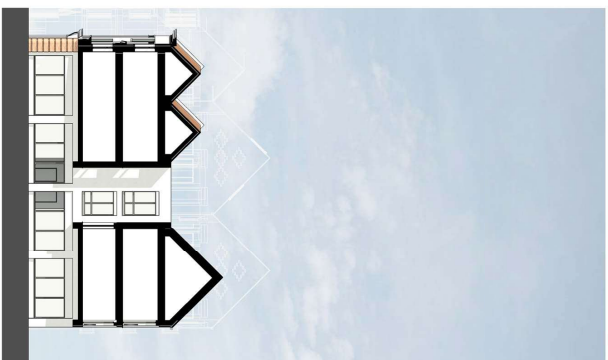
LOCALLOFT
 Eagle Quarter, Newbury
 Proposed Elevations - Block G
 PLANNING P3-111
 20011



1 Block H - East (Market Place) Elevation
1 : 200



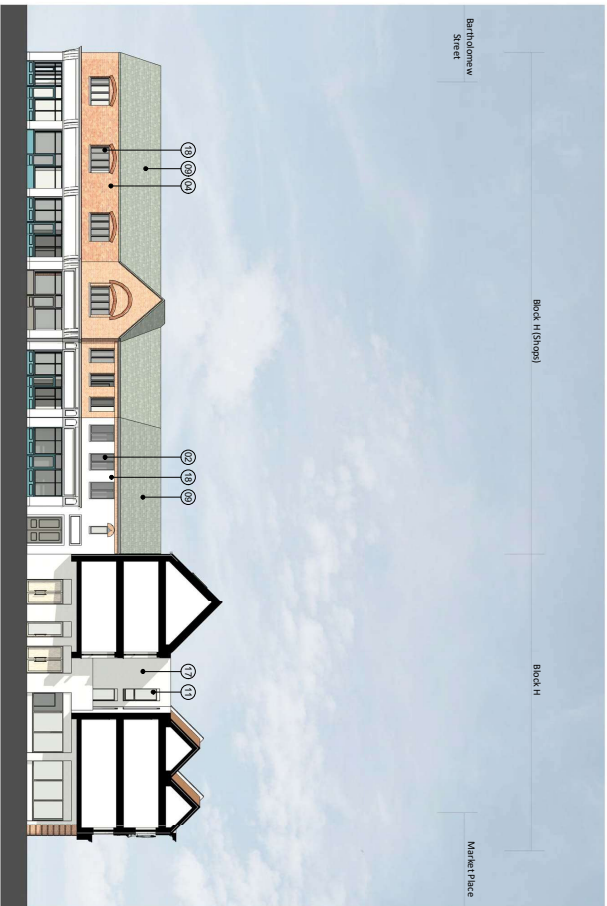
2 Block H - New Street Elevation
1 : 200



3 Block H - Internal Elevation
1 : 200



4 Block H - Bartholomew Street
1 : 200



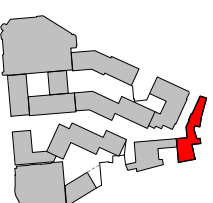
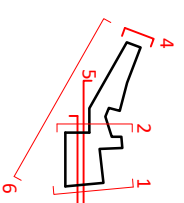
5 Block H - South (New Street) Elevation/ Internal Elevation
1 : 200



6 Block H - Southwest (New Street) Elevation
1 : 200

MATERIAL NOTES

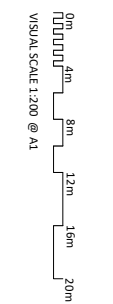
- 17 Brick - Range
- 18 Brick - Light Grey
- 19 Brick - Light Red
- 20 Brick - Red
- 21 Brick - Dark Red
- 22 Brick - Blue
- 23 GRC or Similar - Light Grey
- 24 GRC or Similar - Dusky Pink
- 25 Roof Tiles
- 26 Standing Seam Metal Roof - Dark Grey
- 27 Window / Door Frame - Dark Grey
- 28 Window / Door Frame - Bronze Effect
- 29 Metal Siding / Details - Dark Grey
- 30 Metal Siding / Details - Bronze Effect
- 31 Expanded Mesh
- 32 Brick Detail to Parapet
- 33 White Render
- 34 Window / Door Frame - White
- 35 White GRC Detailing
- 36 Brick - Diamond Pattern
- 37 Clay Hanging Wall Tiles
- 38 Window / Door Frame - Dark Green
- 39 Standing Seam Metal Roof - Dark Brown
- 40 Solid Panels to Sky Bridge
- 41 Light Grey Render
- 42 Obscure Glass Windows



NOTES

1. Refer to the planning consent drawings for details
2. Refer to the landscape and site plan drawings for details
3. Refer to the site schedule

| NO. | REVISION / COMMENTS | DATE | BY | CHECKED |
|-----|-------------------------------|------------|----|---------|
| 01 | Issue for Planning Submission | 10/09/2020 | AL | AL |
| 02 | Revised Planning Consent | 03/09/2021 | AL | AL |
| 03 | Final Planning Consent | 03/09/2021 | AL | AL |
| 04 | Final Planning Consent | 03/09/2021 | AL | AL |
| 05 | Final Planning Consent | 03/09/2021 | AL | AL |
| 06 | Final Planning Consent | 03/09/2021 | AL | AL |
| 07 | Final Planning Consent | 03/09/2021 | AL | AL |
| 08 | Final Planning Consent | 03/09/2021 | AL | AL |
| 09 | Final Planning Consent | 03/09/2021 | AL | AL |
| 10 | Final Planning Consent | 03/09/2021 | AL | AL |



Colladocollins Architects

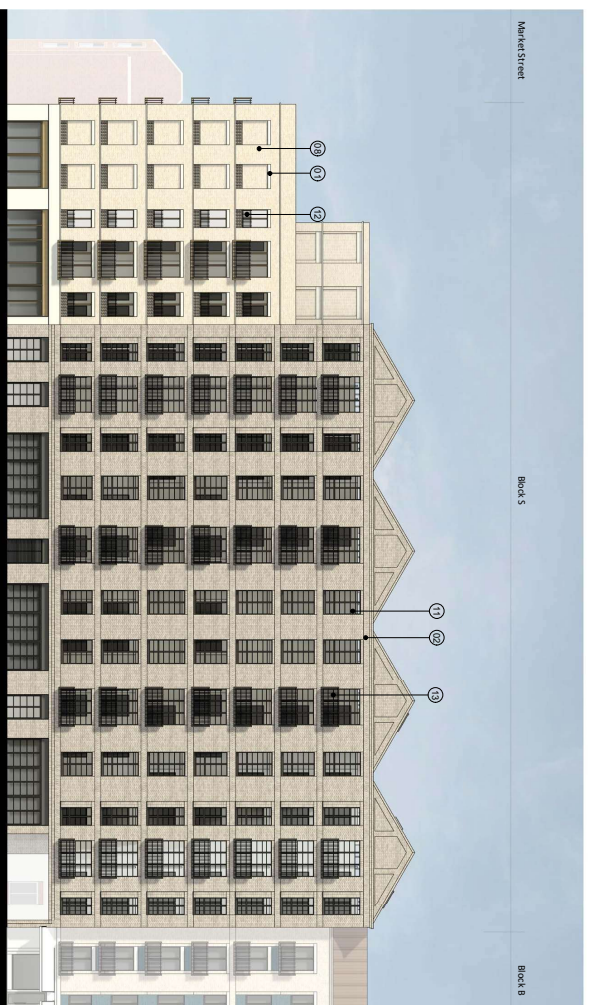
17-19 Chapel Street, Newbury, Berkshire, RG14 2AA
 T: 01235 560140 F: 01235 560140
 E: info@colladocollins.com W: www.colladocollins.com

DATE: 29/01/2020
 DRAWN BY: AL
 CHECKED BY: AL

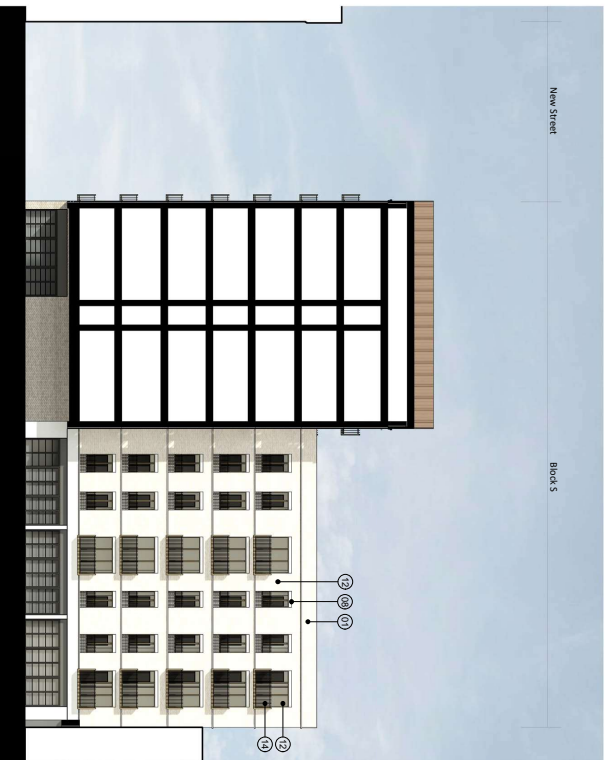
LOCALLOFT
 Eagle Quarter, Newbury
 Proposed Elevations - Block H
 PLANNING P3-112



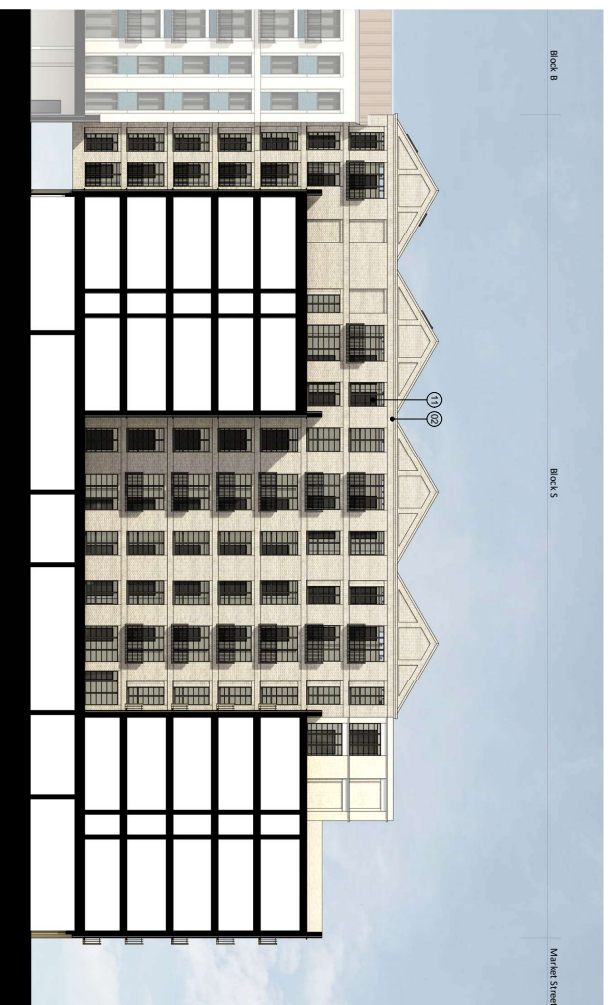
1 Block S - South (Market Street) Elevation
1 : 200



2 Block S - East (New Street) Elevation
1 : 200

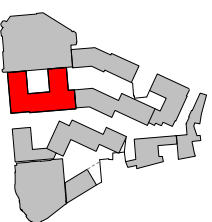
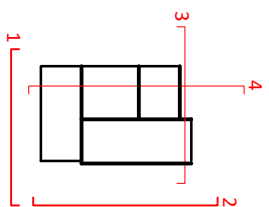


3 Block S - North Elevation/Section
1 : 200



4 Block S - West Elevation/Section
1 : 200

- MATERIAL NOTES**
- 01 Brick - Beige
 - 02 Brick - Light Grey
 - 03 Brick - Light Red
 - 04 Brick - Red
 - 05 Brick - Dark Red
 - 06 Brick - Blue
 - 07 GRC or Similar - Light Grey
 - 08 GRC or Similar - Dusty Pink
 - 09 Bond Tiles
 - 10 Standing Seam Metal Roof - Dark Grey
 - 11 Window / Door Frame - Dark Grey
 - 12 Window / Door Frame - Bronze Effect
 - 13 Metal Railing / Details - Dark Grey
 - 14 Metal Railing / Details - Bronze Effect
 - 15 Expanded Mesh
 - 16 Brick Detail to Parapet
 - 17 White Render
 - 18 Window / Door Frame - White
 - 19 White GRC Detailing
 - 20 Brick - Diamond Pattern
 - 21 Day Hanging Wall Tiles
 - 22 Window / Door Frame - Dark Green
 - 23 Standing Seam Metal Roof - Dark Brown
 - 24 Solid Panels to Sky Bridge
 - 25 Light Grey Render
 - 26 Obscure Glass Windows



NOTES

1. Refer to the main consultant's drawings for details.

2. Refer to the main consultant's drawings for details.

3. Refer to the main consultant's drawings for details.

4. Refer to the main consultant's drawings for details.

5. Refer to the main consultant's drawings for details.

6. Refer to the main consultant's drawings for details.

7. Refer to the main consultant's drawings for details.

8. Refer to the main consultant's drawings for details.

9. Refer to the main consultant's drawings for details.

10. Refer to the main consultant's drawings for details.

11. Refer to the main consultant's drawings for details.

12. Refer to the main consultant's drawings for details.

13. Refer to the main consultant's drawings for details.

14. Refer to the main consultant's drawings for details.

15. Refer to the main consultant's drawings for details.

16. Refer to the main consultant's drawings for details.

17. Refer to the main consultant's drawings for details.

18. Refer to the main consultant's drawings for details.

19. Refer to the main consultant's drawings for details.

20. Refer to the main consultant's drawings for details.

21. Refer to the main consultant's drawings for details.

22. Refer to the main consultant's drawings for details.

23. Refer to the main consultant's drawings for details.

24. Refer to the main consultant's drawings for details.

25. Refer to the main consultant's drawings for details.

26. Refer to the main consultant's drawings for details.

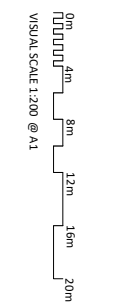
27. Refer to the main consultant's drawings for details.

28. Refer to the main consultant's drawings for details.

29. Refer to the main consultant's drawings for details.

30. Refer to the main consultant's drawings for details.

| NO. | REVISION | DATE | BY | CHK |
|-----|-------------------------------|------------|----|-----|
| 01 | Issue for Planning Submission | 12/01/2020 | AK | AK |
| 02 | Issue for Planning Submission | 12/01/2020 | AK | AK |
| 03 | Issue for Planning Submission | 12/01/2020 | AK | AK |
| 04 | Issue for Planning Submission | 12/01/2020 | AK | AK |
| 05 | Issue for Planning Submission | 12/01/2020 | AK | AK |
| 06 | Issue for Planning Submission | 12/01/2020 | AK | AK |
| 07 | Issue for Planning Submission | 12/01/2020 | AK | AK |
| 08 | Issue for Planning Submission | 12/01/2020 | AK | AK |
| 09 | Issue for Planning Submission | 12/01/2020 | AK | AK |
| 10 | Issue for Planning Submission | 12/01/2020 | AK | AK |
| 11 | Issue for Planning Submission | 12/01/2020 | AK | AK |
| 12 | Issue for Planning Submission | 12/01/2020 | AK | AK |
| 13 | Issue for Planning Submission | 12/01/2020 | AK | AK |
| 14 | Issue for Planning Submission | 12/01/2020 | AK | AK |
| 15 | Issue for Planning Submission | 12/01/2020 | AK | AK |
| 16 | Issue for Planning Submission | 12/01/2020 | AK | AK |
| 17 | Issue for Planning Submission | 12/01/2020 | AK | AK |
| 18 | Issue for Planning Submission | 12/01/2020 | AK | AK |
| 19 | Issue for Planning Submission | 12/01/2020 | AK | AK |
| 20 | Issue for Planning Submission | 12/01/2020 | AK | AK |
| 21 | Issue for Planning Submission | 12/01/2020 | AK | AK |
| 22 | Issue for Planning Submission | 12/01/2020 | AK | AK |
| 23 | Issue for Planning Submission | 12/01/2020 | AK | AK |
| 24 | Issue for Planning Submission | 12/01/2020 | AK | AK |
| 25 | Issue for Planning Submission | 12/01/2020 | AK | AK |
| 26 | Issue for Planning Submission | 12/01/2020 | AK | AK |
| 27 | Issue for Planning Submission | 12/01/2020 | AK | AK |
| 28 | Issue for Planning Submission | 12/01/2020 | AK | AK |
| 29 | Issue for Planning Submission | 12/01/2020 | AK | AK |
| 30 | Issue for Planning Submission | 12/01/2020 | AK | AK |



Colladocollins Architects

17-19 King Street, Newbury, RG14 5AA
 T 01235 830 337 F 01235 830 340
 www.colladocollins.com

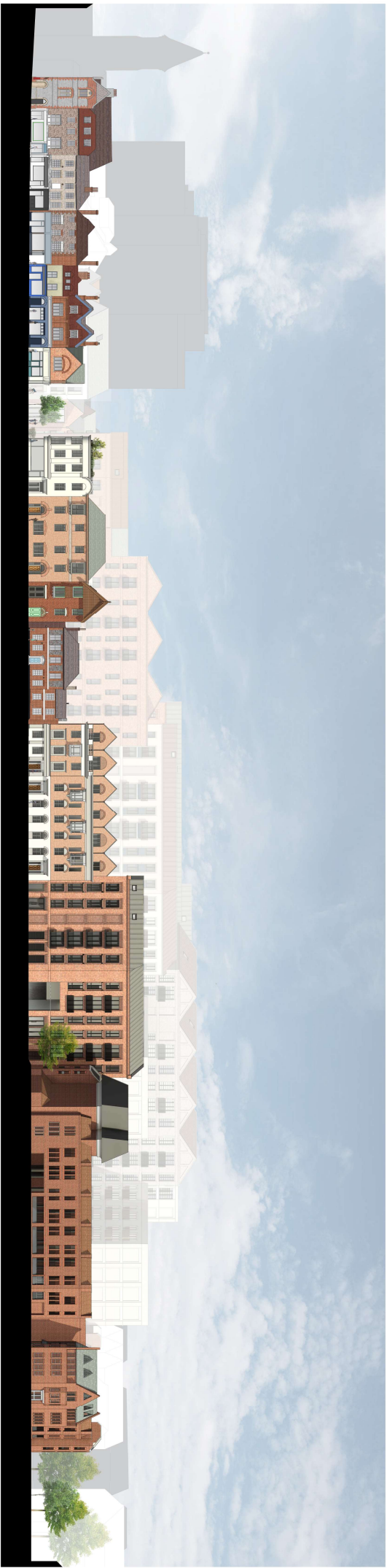
29/01/2020
 Eagle Quarter, Newbury
 Proposed Elevations - Block S

LOGICALORT

Eagle Quarter, Newbury
 Proposed Elevations - Block S

PLANNING P3-113

20011



NOTES:
 1. All elevations are shown in perspective.
 2. All elevations are shown in perspective.
 3. All elevations are shown in perspective.
 4. All elevations are shown in perspective.
 5. All elevations are shown in perspective.
 6. All elevations are shown in perspective.
 7. All elevations are shown in perspective.
 8. All elevations are shown in perspective.
 9. All elevations are shown in perspective.
 10. All elevations are shown in perspective.

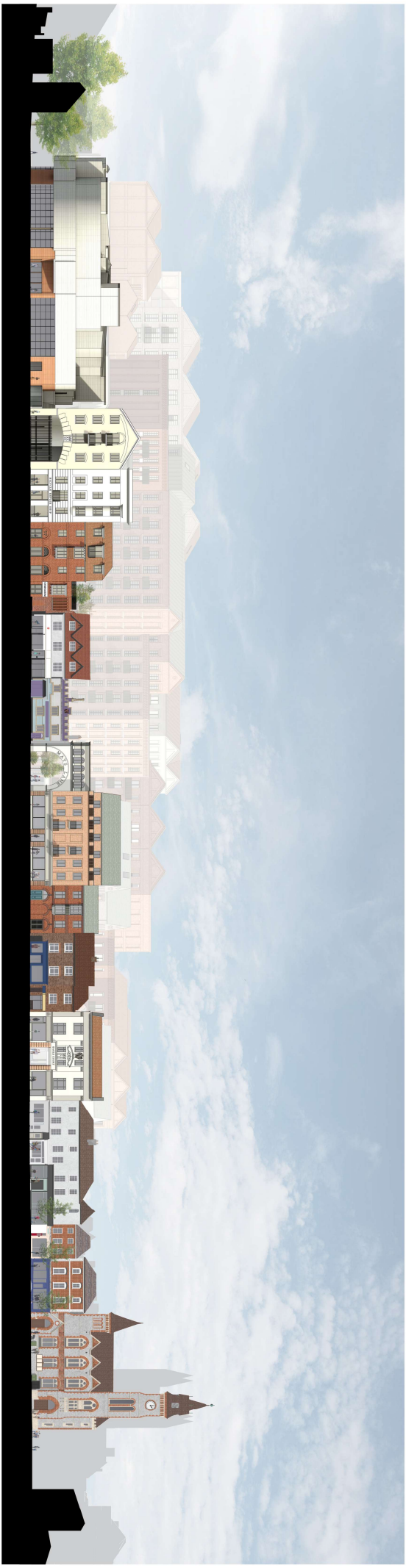
| NO. | DESCRIPTION | DATE | BY | CHKD. |
|-----|-----------------------|------------|-----|-------|
| 1 | PRELIMINARY ELEVATION | 10/20/2011 | JAC | JAC |
| 2 | REVISED ELEVATION | 10/20/2011 | JAC | JAC |
| 3 | REVISED ELEVATION | 10/20/2011 | JAC | JAC |
| 4 | REVISED ELEVATION | 10/20/2011 | JAC | JAC |
| 5 | REVISED ELEVATION | 10/20/2011 | JAC | JAC |
| 6 | REVISED ELEVATION | 10/20/2011 | JAC | JAC |
| 7 | REVISED ELEVATION | 10/20/2011 | JAC | JAC |
| 8 | REVISED ELEVATION | 10/20/2011 | JAC | JAC |
| 9 | REVISED ELEVATION | 10/20/2011 | JAC | JAC |
| 10 | REVISED ELEVATION | 10/20/2011 | JAC | JAC |



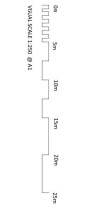
On
 VISUAL SCALE 1:250 @ A1

ColiadaColl Architects
 1111 Broadway
 Newbury
 02459
 Tel: 617.552.1111
 Fax: 617.552.1112
 www.coliada-coll.com

LOCHALOR
 Eagle Quarter Newbury
 Bartholomew Street Elevation
 PLANNING
 20011 P3-200



| NO. | DESCRIPTION | DATE | BY |
|-----|------------------------|------------|----|
| 1 | PRELIMINARY DESIGN | 10/20/2021 | ML |
| 2 | FINAL DESIGN | 10/20/2021 | ML |
| 3 | CONSTRUCTION DOCUMENTS | 10/20/2021 | ML |
| 4 | AS-BUILT | 10/20/2021 | ML |
| 5 | REVISIONS | 10/20/2021 | ML |
| 6 | REVISIONS | 10/20/2021 | ML |
| 7 | REVISIONS | 10/20/2021 | ML |
| 8 | REVISIONS | 10/20/2021 | ML |
| 9 | REVISIONS | 10/20/2021 | ML |
| 10 | REVISIONS | 10/20/2021 | ML |



ColtadoCollifArchitects
 1114 Broadway
 Denver, CO 80202
 Phone: 303.733.1111
 Fax: 303.733.1112
 Email: info@coltado.com

LochHalkort
 Eagle Quarter / Newbury
 Chicago Street / Market Place
 Excavation
 DRAWING
 20011 P3-201



NOTES:

1. All elevations are shown in perspective for clarity.

2. All elevations are shown in perspective for clarity.

3. All elevations are shown in perspective for clarity.

4. All elevations are shown in perspective for clarity.

5. All elevations are shown in perspective for clarity.

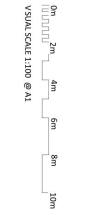
6. All elevations are shown in perspective for clarity.

7. All elevations are shown in perspective for clarity.

8. All elevations are shown in perspective for clarity.

9. All elevations are shown in perspective for clarity.

10. All elevations are shown in perspective for clarity.



ColiadaColl Architects

1111 Broadway
 Suite 200
 Denver, CO 80202
 Phone: 303.733.1111
 Fax: 303.733.1112
 www.coliada.com

Loch Halloran

1111 Broadway
 Suite 200
 Denver, CO 80202
 Phone: 303.733.1111
 Fax: 303.733.1112
 www.lochhalloran.com

Loch Halloran
 Eagle Quarter, Newbury
 Proposed Market Street Elevation
 PLANNING
 20011 P3-202